

# **Banyule Primary School (4746)**

---

## **2008 School Level Report**

---

---

Please check the data in this report. If, after comparing it with your own records, you deem it to be incorrect or incomplete, follow the directions on the following website:

- <http://www.education.vic.gov.au/management/schoolimprovement/performancecd/>  
then select 'School Performance Reports'.
- 
-

# Contents

---

	<b>Page No.</b>
Privacy	3
SFO Density and LBOTE	4
Assessment of Reading Prep to Year 2	5-6
Teacher Judgments against the VELs	7-15
NAPLAN - Reading	16
- Writing	17
- Numeracy	18
AIM - Reading	19
- Mathematics	20
Teacher Assessment of Student Progress (PSD students)	21-22
Enrolment	23
Student Absence	24
Opinion Surveys - Parent	25
- Staff	26
Performance & Development Culture	27
Staff Sick Leave	28
Teaching Staff Retention	29
Bank Balances	30

## Privacy

---

When reporting on the school's performance to the school community, care must be taken to avoid the disclosure of information that can directly or indirectly identify an individual. This may be a particular issue when reporting on the achievement of specific cohorts of students or the opinions of staff where there are small numbers.

In situations where privacy cannot be assured, schools may wish to report on the mean result or provide a written comment on school, year level or cohort performance.

Where the School Level Report is provided to school council members as part of any annual reporting process, or used for discussion on a school's performance, such as in consultation with the school community in the school self-evaluation process, it is important to remind school community members of their duty to only use this information for the purpose it was provided, and that the material must be kept confidential.

It is important to note that information that identifies an individual or can be used with other readily available information to identify a person is now protected by the *Information Privacy Act 2000* (<http://www.education.vic.gov.au/about/deptpolicies/informationprivacy.htm>).

---

# SFO Density and LBOTE

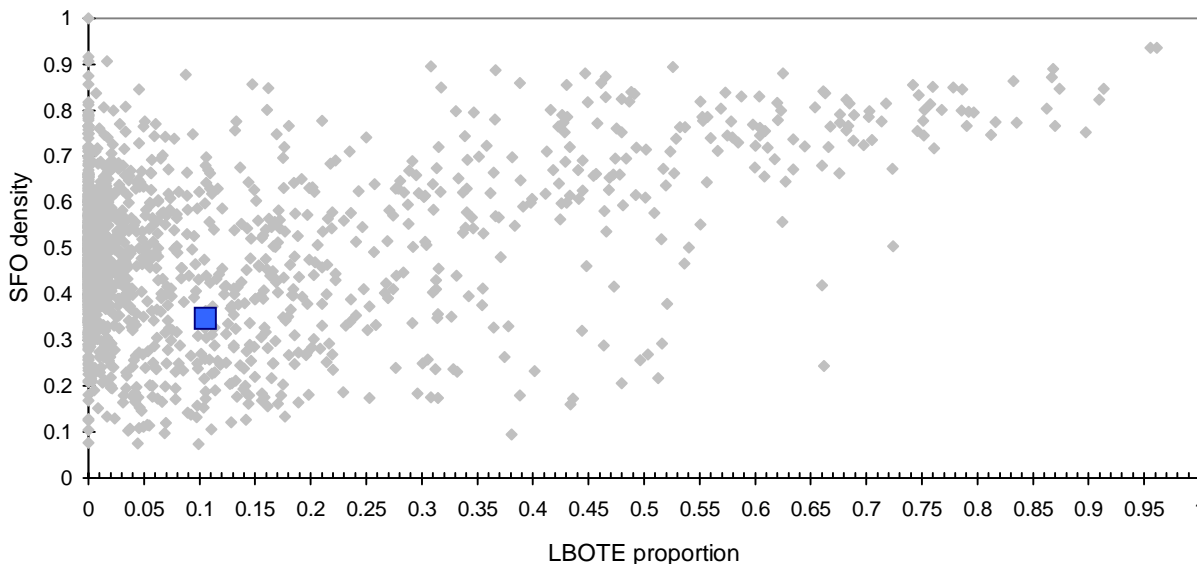
School no: 4746

School name: Banyule Primary School

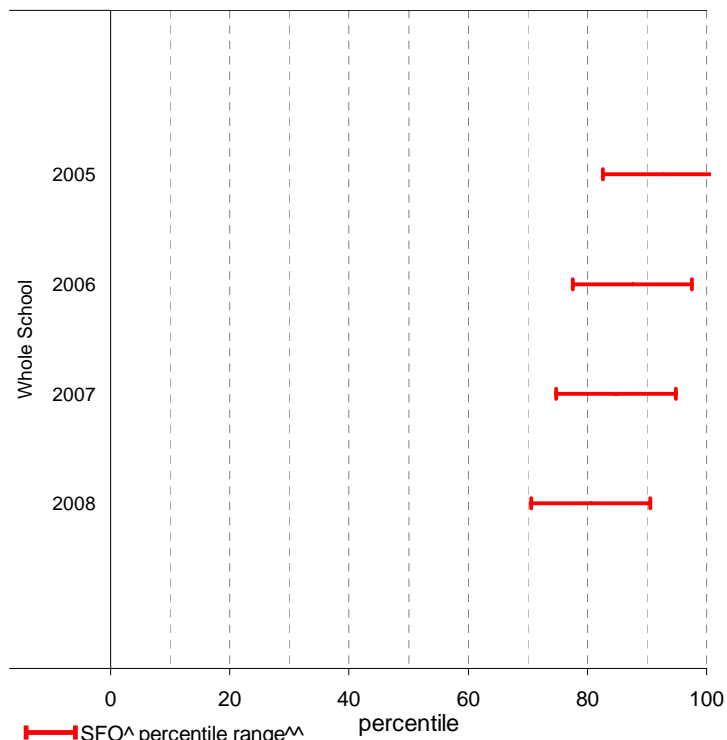
Explanation: The chart below plots the school's 2008 SFO (Student Family Occupation) density<sup>^</sup> and LBOTE (Language Background Other Than English) proportion\* against that of all government schools. This school is highlighted as a square on the chart.

	2001	2002	2003	2004	2005	2006	2007	2008
SFO density <sup>^</sup> :					0.25	0.26	0.30	0.35
LBOTE proportion*:	0.07	0.07	0.07	0.07	0.08	0.08	0.09	0.11

School's 2008 SFO density and LBOTE proportion against that of all government schools



School's SFO<sup>^</sup> percentile range<sup>^^</sup> over time



Notes: <sup>^</sup> The higher the SFO density, the lower the SFO percentile and the lower the socio-economic status (SES).  
<sup>^^</sup> The school's SFO percentile range shows the 20% of schools with an SFO Density most like this school.  
 \* From 2007, a student is LBOTE if either the student or one parent/guardian speaks a language other than English at home. Prior to 2007, a student is LBOTE if the student or one of the parents was born in a non-English speaking country.

## Assessment of Reading: Prep to Year 2

School no: 4746

School name: Banyule Primary School

Explanation: Students' ability to read unsighted text is assessed at the end of each year. The data presented here includes 'deemed not capable' students.

More detailed information (including data where deemed not capable students are excluded) is available in the Assessment of Reading report, available from the School Performance Reports website.

Source of data: Data transmitted from school to DEECD via an online web-form.

	Prep										Year 1										Year 2									
	School									State	School									State	School									State
	2004	2005	2006	2007	2008	2008	2004	2005	2006	2007	2008	2008	2004	2005	2006	2007	2008	2008	2004	2005	2006	2007	2008	2008						
	(No.)	%	(No.)	%	(No.)	%	(No.)	%	(No.)	%	(No.)	%	(No.)	%	(No.)	%	(No.)	%	(No.)	%	(No.)	%	(No.)	%	(No.)	%				
<b>Level 1</b>																														
100%	(22)	62.9	(22)	71.0	(18)	85.7	(22)	100.0	(33)	97.1	69.0	(33)	94.3	(32)	100.0	(29)	100.0	(18)	100.0	(18)	100.0									
90-99%	(13)	37.1	(6)	19.4					(1)	2.9	25.4	(2)	5.7																	
80-89%			(3)	9.7							2.3																			
51-79%					(2)	9.5					1.5																			
50% or below					(1)	4.8					1.7																			
Total	(35)	100.0	(31)	100.0	(21)	100.0	(22)	100.0	(34)	100.0	100.0	(35)	100.0	(32)	100.0	(29)	100.0	(18)	100.0	(18)	100.0									
<b>Subtotal 90-100%</b>	<b>(35)</b>	<b>100.0</b>	<b>(28)</b>	<b>90.3</b>	<b>(18)</b>	<b>85.7</b>	<b>(22)</b>	<b>100.0</b>	<b>(34)</b>	<b>100.0</b>	<b>94.5</b>	<b>(35)</b>	<b>100.0</b>	<b>(32)</b>	<b>100.0</b>	<b>(29)</b>	<b>100.0</b>	<b>(18)</b>	<b>100.0</b>	<b>(18)</b>	<b>100.0</b>									
<b>Level 5</b>																														
100%	(20)	57.1	(20)	64.5	(16)	76.2	(17)	77.3	(23)	67.6	45.3	(32)	91.4	(32)	100.0	(28)	96.6	(18)	100.0	(18)	100.0	(38)	90.5	(35)	100.0					
90-99%	(13)	37.1	(6)	19.4	(2)	9.5	(3)	13.6	(8)	23.5	36.1	(3)	8.6			(1)	3.4					(4)	9.5							
80-89%	(1)	2.9	(4)	12.9					(2)	5.9	5.2																			
51-79%	(1)	2.9	(1)	3.2					(1)	2.9	3.6																			
50% or below					(3)	14.3	(2)	9.1			9.8																			
Total	(35)	100.0	(31)	100.0	(21)	100.0	(22)	100.0	(34)	100.0	100.0	(35)	100.0	(32)	100.0	(29)	100.0	(18)	100.0	(18)	100.0	(42)	100.0	(35)	100.0					
<b>Subtotal 90-100%</b>	<b>(33)</b>	<b>94.3</b>	<b>(26)</b>	<b>83.9</b>	<b>(18)</b>	<b>85.7</b>	<b>(20)</b>	<b>90.9</b>	<b>(31)</b>	<b>91.2</b>	<b>81.3</b>	<b>(35)</b>	<b>100.0</b>	<b>(32)</b>	<b>100.0</b>	<b>(29)</b>	<b>100.0</b>	<b>(18)</b>	<b>100.0</b>	<b>(18)</b>	<b>100.0</b>	<b>(42)</b>	<b>100.0</b>	<b>(35)</b>	<b>100.0</b>					
<b>Level 15</b>																														
100%											37.1	(19)	54.3	(22)	68.8	(18)	62.1	(14)	77.8	(13)	72.2	(31)	73.8	(35)	100.0					
90-99%											49.2	(10)	28.6	(10)	31.2	(10)	34.5	(3)	16.7	(5)	27.8	(7)	16.7							
80-89%											6.3	(6)	17.1									(3)	7.1							
51-79%											3.0					(1)	3.4													
50% or below											4.3					(1)	5.6					(1)	2.4							
Total											100.0	(35)	100.0	(32)	100.0	(29)	100.0	(18)	100.0	(18)	100.0	(42)	100.0	(35)	100.0					
<b>Subtotal 90-100%</b>											<b>86.4</b>	<b>(29)</b>	<b>82.9</b>	<b>(32)</b>	<b>100.0</b>	<b>(28)</b>	<b>96.6</b>	<b>(17)</b>	<b>94.4</b>	<b>(18)</b>	<b>100.0</b>	<b>(38)</b>	<b>90.5</b>	<b>(35)</b>	<b>100.0</b>					
<b>Level 20</b>																														
100%											47.4											(22)	52.4	(18)	51.4					
90-99%											47.1											(14)	33.3	(17)	48.6					
80-89%											2.4											(5)	11.9	(8)	24.2					
51-79%											0.9													(8)	26.7					
50% or below											2.2													(1)	4.5					
Total											100.0	(42)	100.0	(35)	100.0	(33)	100.0	(30)	100.0	(22)	100.0	(42)	100.0	(35)	100.0					
<b>Subtotal 90-100%</b>											<b>94.5</b>	<b>(36)</b>	<b>85.7</b>	<b>(35)</b>	<b>100.0</b>	<b>(33)</b>	<b>100.0</b>	<b>(30)</b>	<b>100.0</b>	<b>(21)</b>	<b>95.5</b>	<b>(36)</b>	<b>85.7</b>	<b>(35)</b>	<b>100.0</b>					

	2004	2005	2006	2007	2008	2004	2005	2006	2007	2008	2004	2005	2006	2007	2008
No. of students DNC <sup>1</sup> :	0	2	1	0	0	0	0	0	0	0	3	0	0	0	0
No. of students at risk <sup>2</sup> :	0	3	3	0	0	0	0	0	0	0	4	0	0	0	1

**Notes:**

<sup>1</sup> Students can be DNC (deemed not capable) only if they meet one of the conditions (insufficient English, receiving D&I funding, insufficient attendance at the school or referred from Reading Recovery) AND read below the minimum standard.

<sup>2</sup> The number of students at risk is the number of students reading at less than 90% accuracy at Level 1 for Prep, Level 5 for Year 1 or Level 15 for Year 2.

# Assessment of Reading: Prep to Year 2

School no: 4746

School name: Banyule Primary School

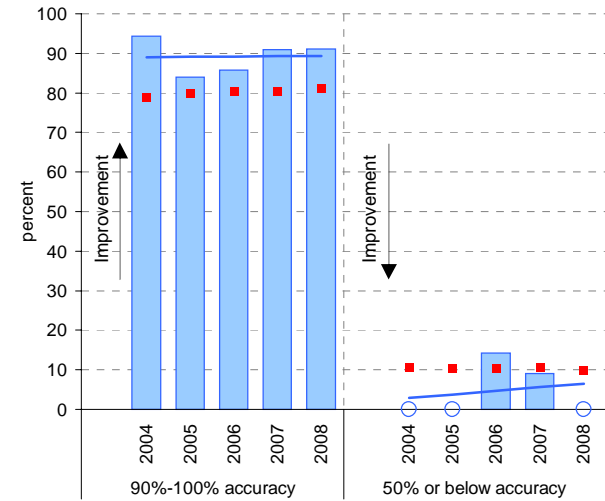
Explanation: Students' ability to read unsighted text is assessed at the end of each year.

Source of data: Data transmitted from school to DEECD via an online web-form.

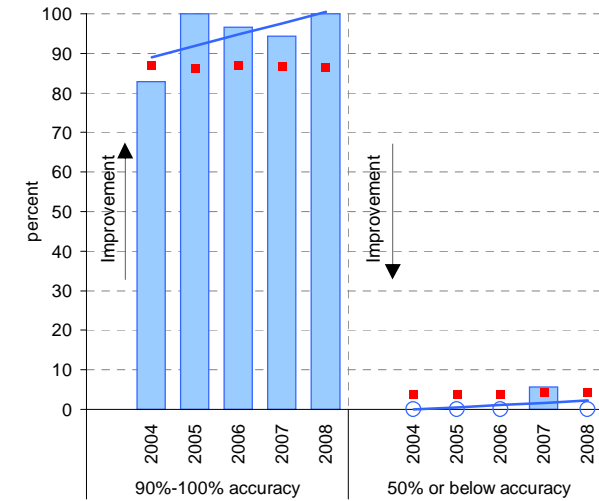
Notes: \* The school trendline is being trialled. It is only plotted when there is data for each calendar year.

^ This data is highly skewed, with a lot of schools obtaining the best possible result, particularly in Year 2. The maximum achievable percentile is therefore significantly less than 100.

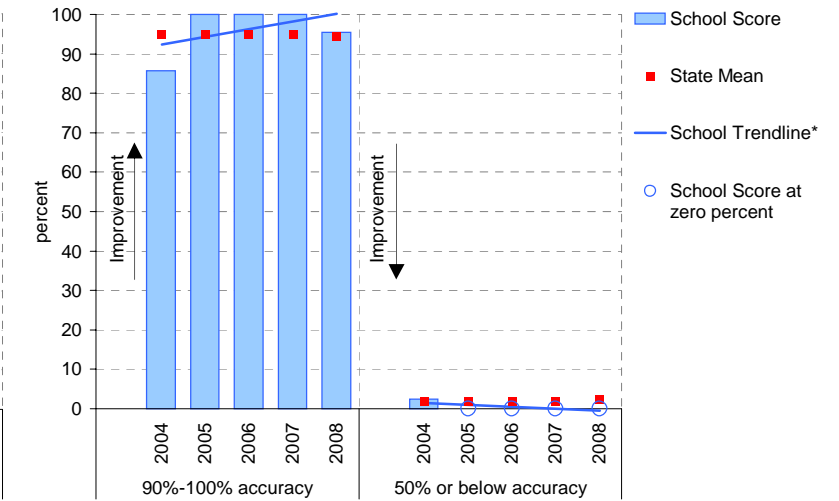
Year level: Prep  
Text level: Level 5



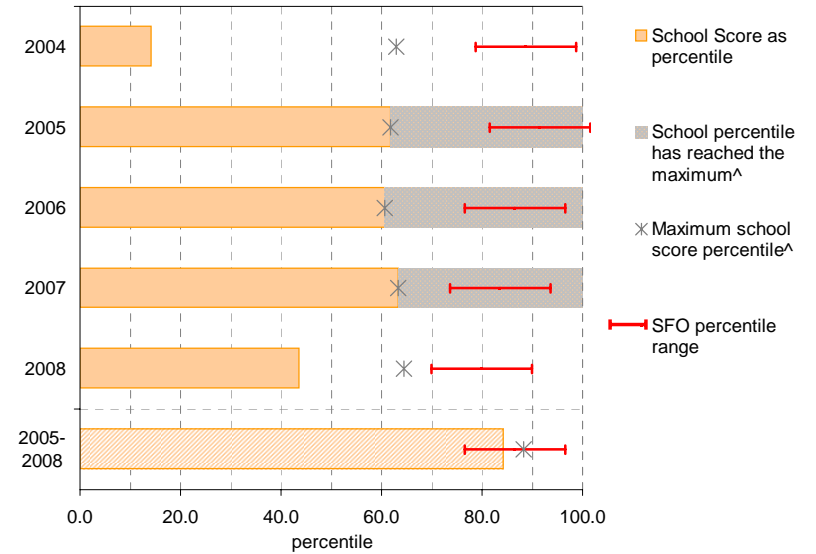
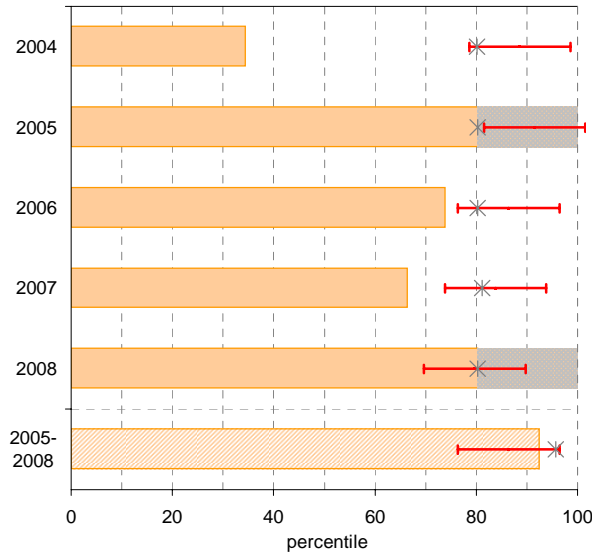
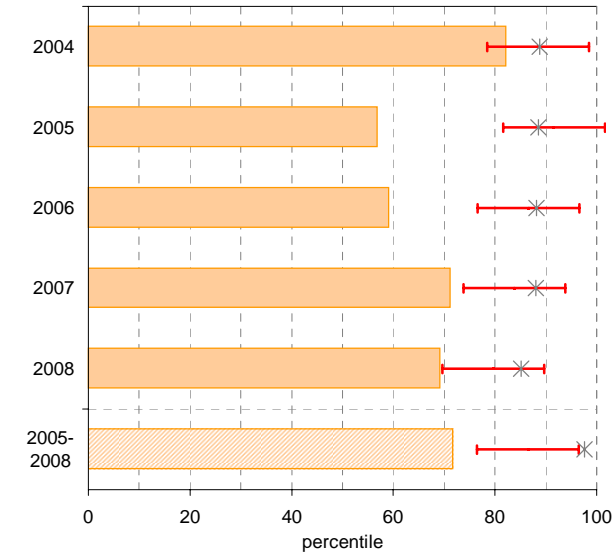
Year level: Year 1  
Text level: Level 15



Year level: Year 2  
Text level: Level 20



90%-100% accuracy as percentile against SFO percentile range



# Teacher Judgments against the VELS - Year levels Prep-6 combined

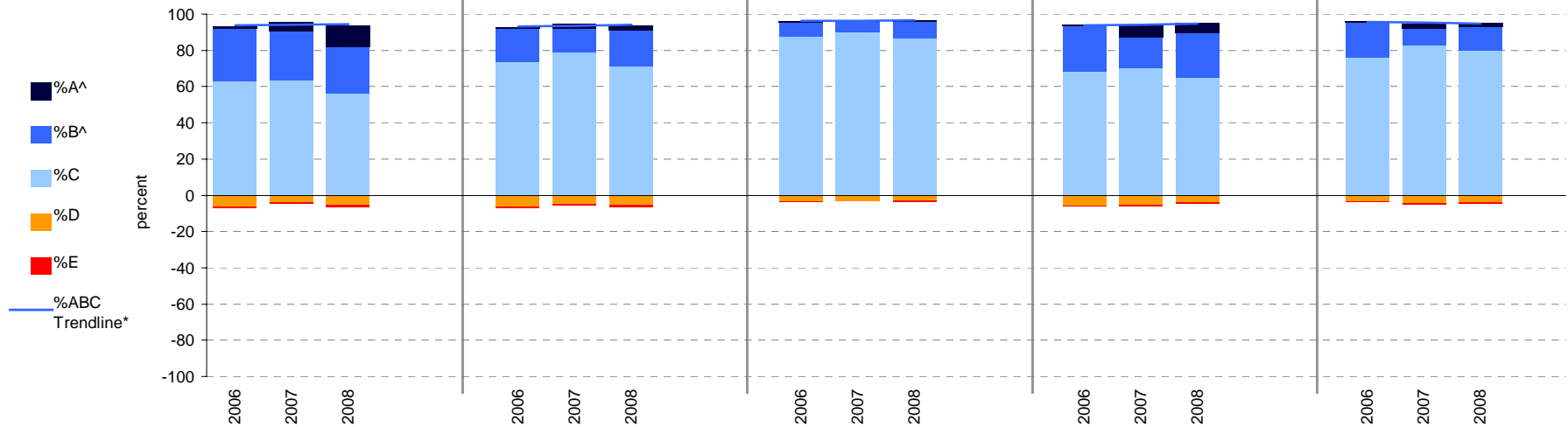
School no: 4746

School name: Banyule Primary School

Source of data: Data retrieved electronically from CASES21.

Explanation: Teacher judgments of student achievement against the VELS.

Year Levels:	Reading							Writing					Speaking & Listening					Number					Measurement, Chance & Data									
	total students	% A^	% B^	% C	% D	% E		total students	% A^	% B^	% C	% D	% E		total students	% A^	% B^	% C	% D	% E		total students	% A^	% B^	% C	% D	% E	total students	% A^	% B^	% C	% D
Prep-6	2006	232	1	29	63	6	0	232	0	19	74	6	1	231	0	8	88	3	0	232	0	25	68	6	0	232	0	19	76	3	0	
(combined)	2007	206	5	27	64	4	0	206	2	13	79	5	0	206	0	6	90	3	0	206	6	17	70	5	1	206	2	9	83	4	1	
	2008	202	11	26	56	5	1	202	2	20	71	5	1	203	0	9	87	3	0	203	5	25	65	4	1	203	2	13	80	4	1	



Notes: \* The school trendline is only plotted when there is data for each calendar year.

^ The cutoff between grades A and B changed in 2007. Further information is available on the following website:  
<http://www.education.vic.gov.au/studentlearning/studentreports/schools/whatsnew.htm>.

# Teacher Judgments against the VELS - English (primary)

School no: 4746

School name: Banyule Primary School

Source of data: Data retrieved electronically from CASES21.

Explanation: Teacher judgments of student achievement against the VELS.

Notes: \* The school trendline is only plotted when there is data for each calendar year.

\*\* In 2006, approx. 850 schools assessed their students against the 0.25 VELS scale. 2006 benchmarks are therefore based on a subset of schools.

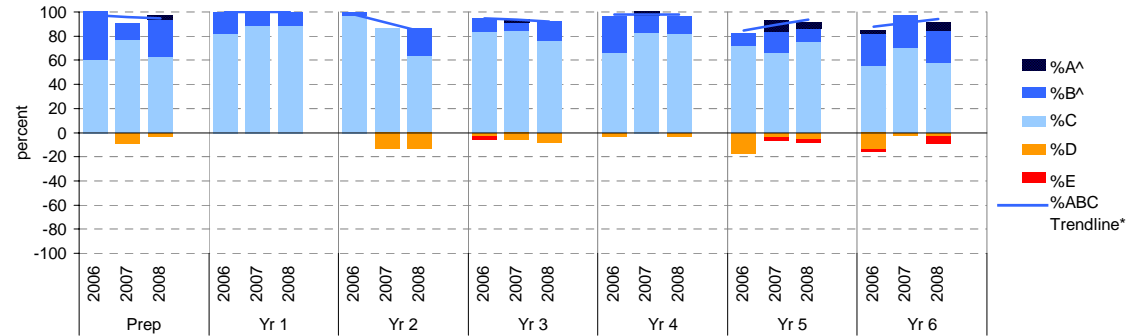
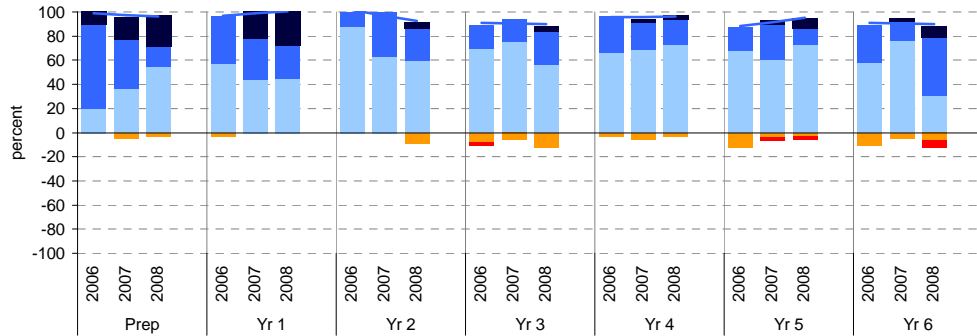
^ The cutoff between grades A and B changed in 2007. Further information is available on the following website: <http://www.education.vic.gov.au/studentlearning/studentreports/schools/whatsnew.htm>.

## Reading

	total students	% of students by grade					Mean Score			total students	% of students by grade					Mean Score			
		A^	B^	C	D	E	School	State**			A^	B^	C	D	E	School	State**		
Prep	2006	20	10	70	20	0	0	1.25	1.01	Yr 4	2006	30	0	30	67	3	0	3.03	2.96
	2007	22	18	41	36	5	0	1.10	1.01		2007	35	3	23	69	6	0	3.04	2.97
	2008	35	26	17	54	3	0	1.05			2008	33	3	21	73	3	0	3.02	
Yr 1	2006	28	0	39	57	4	0	1.57	1.57	Yr 5	2006	40	0	20	68	13	0	3.43	3.44
	2007	18	22	33	44	0	0	1.68	1.57		2007	30	3	30	60	3	3	3.52	3.45
	2008	18	28	28	44	0	0	1.71			2008	36	8	14	72	3	3	3.47	
Yr 2	2006	33	0	12	88	0	0	1.98	2.04	Yr 6	2006	45	0	31	58	11	0	3.99	3.94
	2007	30	0	37	63	0	0	2.04	2.06		2007	38	3	16	76	5	0	4.00	3.95
	2008	22	5	27	59	9	0	2.05			2008	33	9	48	30	6	6	4.05	
Yr 3	2006	36	0	19	69	8	3	2.47	2.49										
	2007	33	0	18	76	6	0	2.45	2.50										
	2008	25	4	28	56	12	0	2.49											

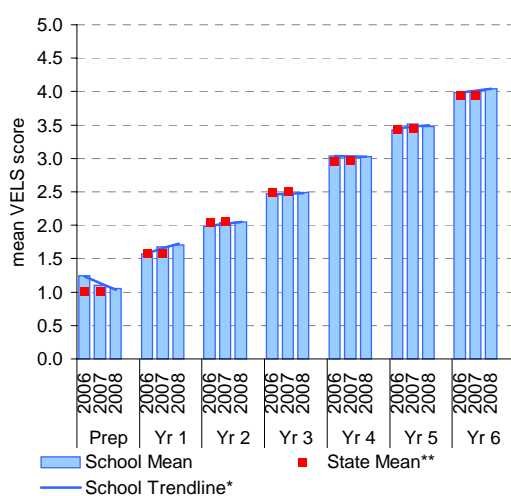
## Writing

	total students	% of students by grade					Mean Score			total students	% of students by grade					Mean Score			
		A^	B^	C	D	E	School	State**			A^	B^	C	D	E	School	State**		
Prep	2006	20	0	40	60	0	0	1.05	0.97	Yr 4	2006	30	0	30	67	3	0	3.03	2.89
	2007	22	0	14	77	9	0	0.81	0.97		2007	35	3	14	83	0	0	2.99	2.91
	2008	35	3	31	63	3	0	0.85			2008	33	0	15	82	3	0	2.98	
Yr 1	2006	28	0	18	82	0	0	1.47	1.47	Yr 5	2006	40	0	10	73	18	0	3.37	3.38
	2007	18	0	11	89	0	0	1.43	1.49		2007	30	10	17	67	3	3	3.51	3.39
	2008	18	0	11	89	0	0	1.43			2008	36	6	11	75	6	3	3.44	
Yr 2	2006	33	0	3	97	0	0	1.95	1.95	Yr 6	2006	45	2	27	56	13	2	3.94	3.88
	2007	30	0	0	87	13	0	1.83	1.96		2007	38	0	26	71	3	0	4.01	3.89
	2008	22	0	23	64	14	0	1.93			2008	33	6	27	58	3	6	3.96	
Yr 3	2006	36	0	11	83	3	3	2.40	2.42										
	2007	33	3	6	85	6	0	2.42	2.43										
	2008	25	0	16	76	8	0	2.44											

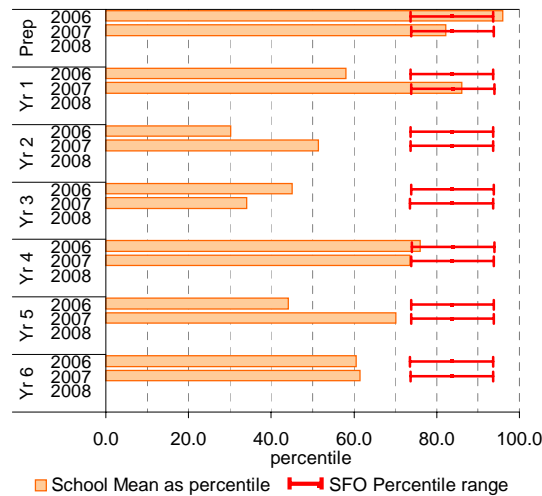


## Reading

School Mean against State Mean

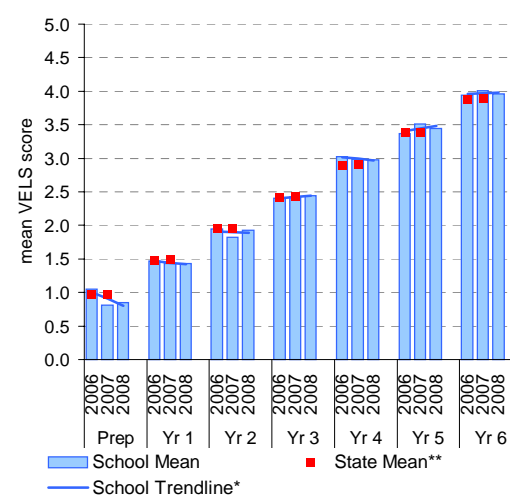


School Mean as percentile against SFO percentile range

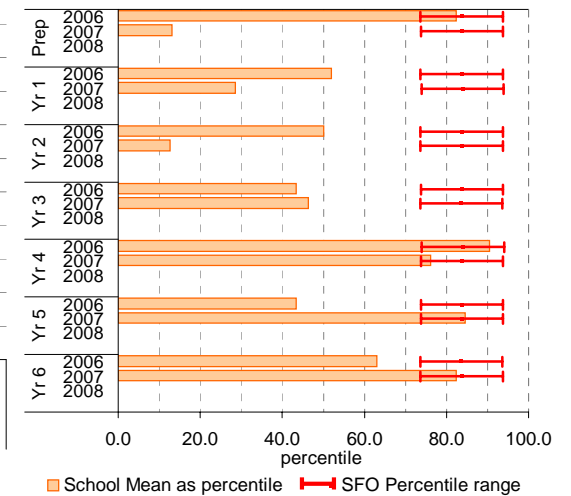


## Writing

School Mean against State Mean



School Mean as percentile against SFO percentile range



# Teacher Judgments against the VELS - English (primary)

School no: 4746

School name: Banyule Primary School

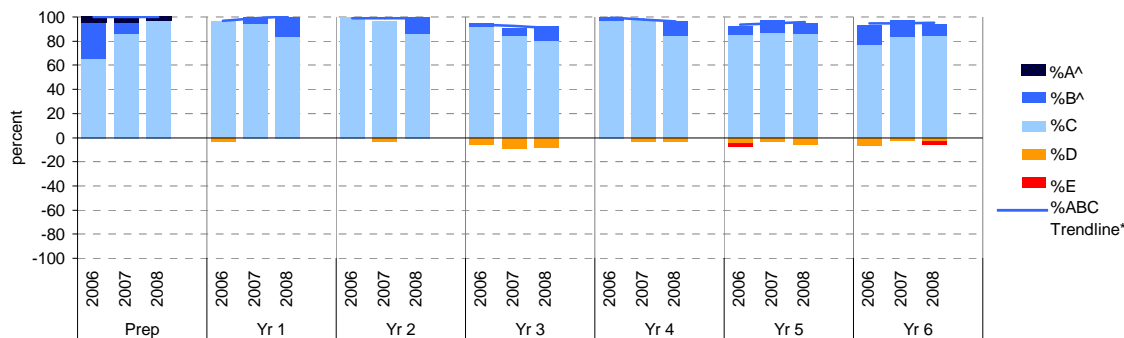
Source of data: Data retrieved electronically from CASES21.

Explanation: Teacher judgments of student achievement against the VELS.

Notes: \* The school trendline is only plotted when there is data for each calendar year.  
 \*\* In 2006, approx. 850 schools assessed their students against the 0.25 VELS scale. 2006 benchmarks are therefore based on a subset of schools.  
 ^ The cutoff between grades A and B changed in 2007. Further information is available on the following website:  
<http://www.education.vic.gov.au/studentlearning/studentreports/schools/whatsnew.htm>.

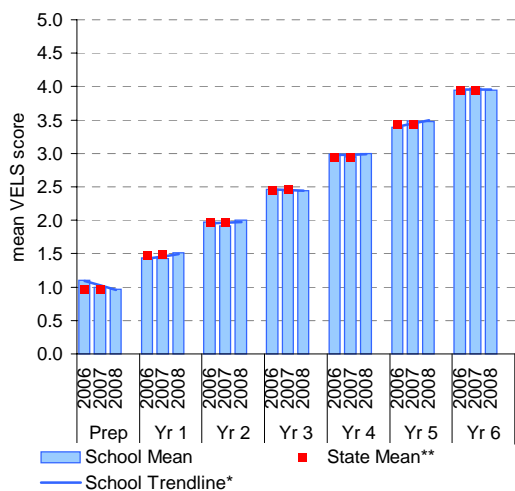
## Speaking and Listening

	total students	% of students by grade					Mean Score			total students	% of students by grade					Mean Score			
		A^	B^	C	D	E	School	State**			A^	B^	C	D	E	School	State**		
Prep	2006	20	5	30	65	0	0	1.10	0.97	Yr 4	2006	30	0	3	97	0	0	2.99	2.94
	2007	22	5	9	86	0	0	1.00	0.97		2007	35	0	0	97	3	0	2.95	2.94
	2008	36	3	0	97	0	0	0.97			2008	33	0	12	85	3	0	3.00	
Yr 1	2006	28	0	0	96	4	0	1.44	1.48	Yr 5	2006	40	0	8	85	5	3	3.39	3.43
	2007	18	0	6	94	0	0	1.43	1.48		2007	30	0	10	87	3	0	3.48	3.43
	2008	18	0	17	83	0	0	1.51			2008	36	0	8	86	6	0	3.48	
Yr 2	2006	33	0	0	100	0	0	1.98	1.98	Yr 6	2006	44	0	16	77	7	0	3.95	3.93
	2007	30	0	0	97	3	0	1.92	1.98		2007	38	0	13	84	3	0	3.97	3.94
	2008	22	0	14	86	0	0	2.00			2008	33	0	9	85	3	3	3.95	
Yr 3	2006	36	0	3	92	6	0	2.46	2.45										
	2007	33	0	6	85	9	0	2.45	2.46										
	2008	25	0	12	80	8	0	2.44											

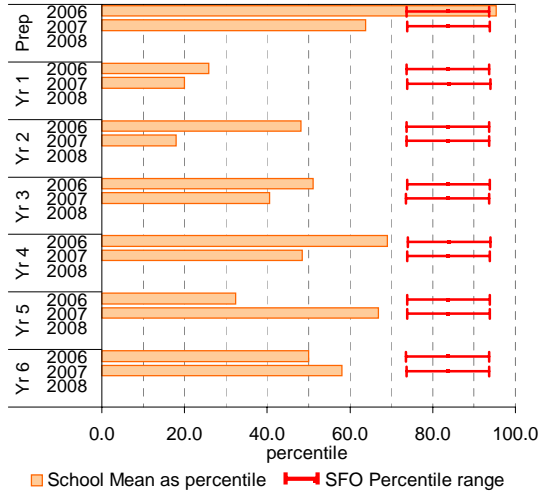


## Speaking and Listening

School Mean against State Mean



School Mean as percentile against SFO percentile range



# Teacher Judgments against the VELS - Mathematics (primary)

School no: 4746

School name: Banyule Primary School

Source of data: Data retrieved electronically from CASES21.

Explanation: Teacher judgments of student achievement against the VELS.

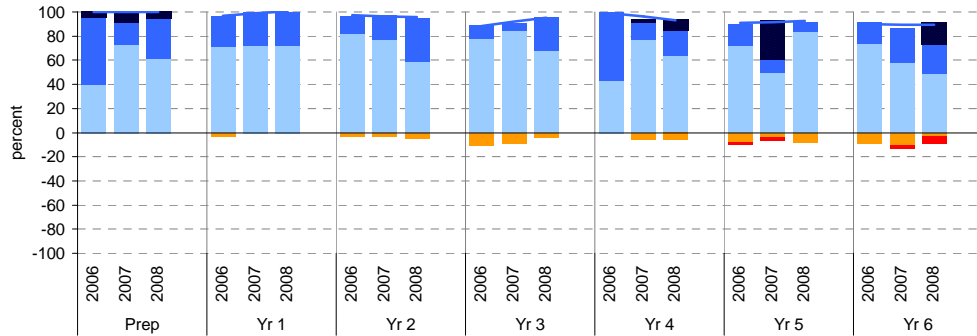
Notes: \* The school trendline is only plotted when there is data for each calendar year.

\*\* In 2006, approx. 850 schools assessed their students against the 0.25 VELS scale. 2006 benchmarks are therefore based on a subset of schools.

^ The cutoff between grades A and B changed in 2007. Further information is available on the following website: <http://www.education.vic.gov.au/studentlearning/studentreports/schools/whatsnew.htm>.

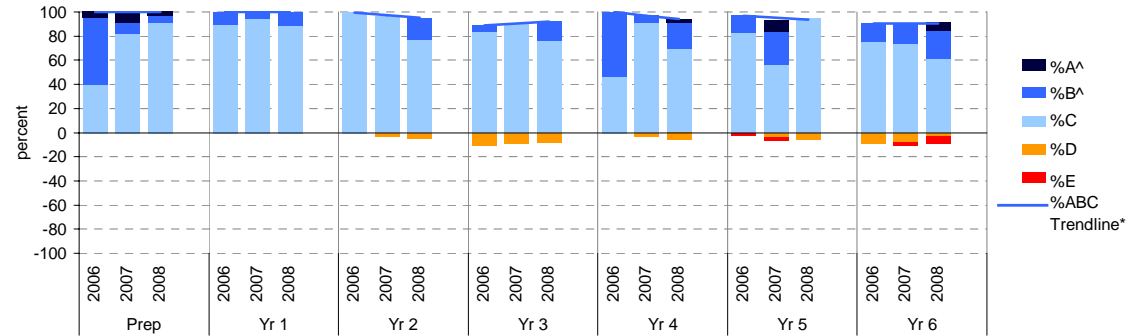
## Number

	total students	% of students by grade					Mean Score			total students	% of students by grade					Mean Score			
		A^	B^	C	D	E	School	State**			A^	B^	C	D	E	School	State**		
Prep	2006	20	5	55	40	0	0	1.17	1.00	Yr 4	2006	30	0	57	43	0	0	3.14	2.95
	2007	22	9	18	73	0	0	1.07	1.00		2007	35	3	14	77	6	0	3.01	2.96
	2008	36	6	33	61	0	0	1.07			2008	33	9	21	64	6	0	3.04	
Yr 1	2006	28	0	25	71	4	0	1.51	1.51	Yr 5	2006	40	0	18	73	8	3	3.44	3.43
	2007	18	0	28	72	0	0	1.50	1.51		2007	30	33	10	50	3	3	3.63	3.44
	2008	18	0	28	72	0	0	1.56			2008	36	0	8	83	8	0	3.41	
Yr 2	2006	33	0	15	82	3	0	1.98	1.99	Yr 6	2006	45	0	18	73	9	0	3.94	3.93
	2007	30	0	20	77	3	0	1.97	1.99		2007	38	0	29	58	11	3	3.95	3.95
	2008	22	0	36	59	5	0	2.02			2008	33	18	24	48	3	6	4.03	
Yr 3	2006	36	0	11	78	11	0	2.42	2.46										
	2007	33	0	6	85	9	0	2.42	2.48										
	2008	25	0	28	68	4	0	2.51											



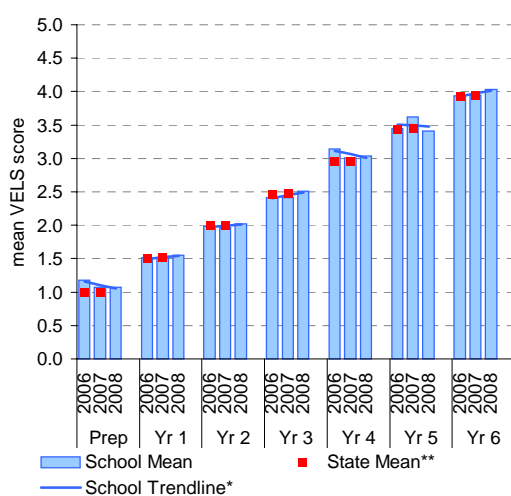
## Measurement, Chance and Data

	total students	% of students by grade					Mean Score			total students	% of students by grade					Mean Score			
		A^	B^	C	D	E	School	State**			A^	B^	C	D	E	School	State**		
Prep	2006	20	5	55	40	0	0	1.16	0.97	Yr 4	2006	30	0	53	47	0	0	3.13	2.94
	2007	22	9	9	82	0	0	1.05	0.97		2007	35	0	6	91	3	0	2.99	2.95
	2008	36	3	6	92	0	0	1.01			2008	33	3	21	70	6	0	3.04	
Yr 1	2006	28	0	11	89	0	0	1.49	1.48	Yr 5	2006	40	0	15	83	0	3	3.44	3.42
	2007	18	0	6	94	0	0	1.46	1.49		2007	30	10	27	57	3	3	3.55	3.43
	2008	18	0	11	89	0	0	1.51			2008	36	0	0	94	6	0	3.42	
Yr 2	2006	33	0	0	100	0	0	1.99	1.97	Yr 6	2006	45	0	16	76	9	0	3.94	3.92
	2007	30	0	0	97	3	0	1.93	1.98		2007	38	0	16	74	8	3	3.92	3.93
	2008	22	0	18	77	5	0	1.99			2008	33	6	24	61	3	6	3.95	
Yr 3	2006	36	0	6	83	11	0	2.40	2.45										
	2007	33	0	0	91	9	0	2.44	2.46										
	2008	25	0	16	76	8	0	2.48											

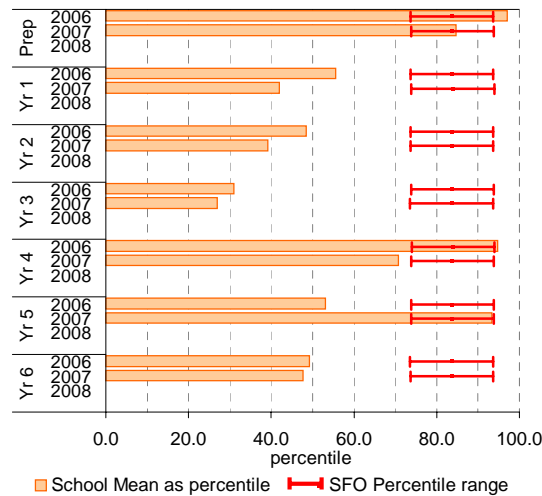


## Number

### School Mean against State Mean

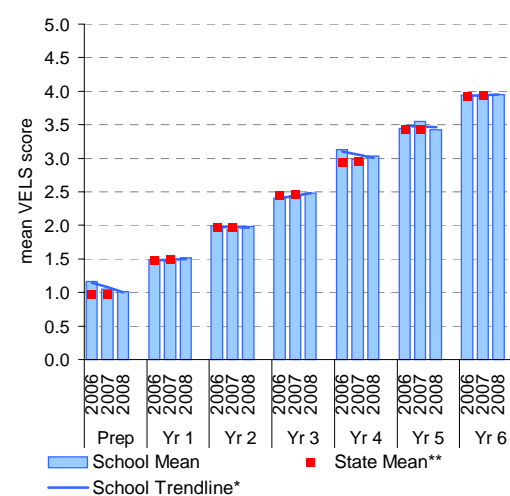


### School Mean as percentile against SFO percentile range

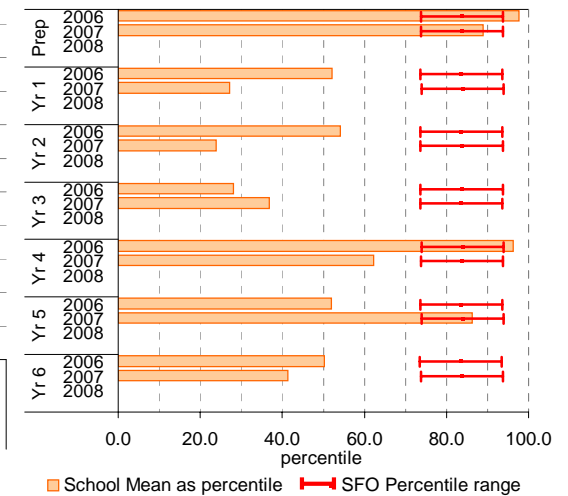


## Measurement, Chance and Data

### School Mean against State Mean



### School Mean as percentile against SFO percentile range



# Teacher Judgments against the VELS - English (primary)

**School no:** 4746  
**School name:** Banyule Primary School  
**Source of data:** Data retrieved electronically from CASES21.  
**Explanation:** Teacher judgments of student achievement against the VELS.

## Reading

Year Level	Year	Total <sup>1</sup>	Assessed <sup>2</sup>	Level 1				Level 2				Level 3				Level 4				Level 5				Level 6				Level 6E			School mean	State mean*	Difference between school and state mean*		
				0.00	0.50	1.00	1.25	1.50	1.75	2.00	2.25	2.50	2.75	3.00	3.25	3.50	3.75	4.00	4.25	4.50	4.75	5.00	5.25	5.50	5.75	6.00	6.25	6.50	6.75						
prep	2008	36	35	1	7	12	6	8	1																						1.05				
prep	2007	22	22	1	2	6	9	4																						1.10	1.01	0.09			
yr1	2008	18	18				8	5	5																						1.71				
prep	2006	20	20		3	1	8	6	2																						1.25	1.01	0.24		
yr1	2007	18	18				1	7	6	4																						1.68	1.57	0.11	
yr2	2008	22	22				2		13	6	1																			2.05					
prep	2005																																		
yr1	2006	28	28			1	2	14	10	1																						1.57	1.57	0.00	
yr2	2007	30	30						6	13	11																					2.04	2.06	-0.01	
yr3	2008	25	25							3	4	10	7	1																			2.49		
yr1	2005																																		
yr2	2006	33	33						6	23	4																					1.98	2.04	-0.06	
yr3	2007	33	33						2		6	19	6																			2.45	2.50	-0.04	
yr4	2008	33	33								1		3	21	7	1																3.02			
yr2	2005																																		
yr3	2006	36	36				1		3	4	21	4	3																			2.47	2.49	-0.01	
yr4	2007	35	35								2	1	23	8	1																3.04	2.97	0.06		
yr5	2008	36	36								1		1	8	18	5	3																3.47		
yr3	2005																																		
yr4	2006	30	30								1	3	17	9																		3.03	2.96	0.08	
yr5	2007	30	30								1	1		2	16	9	1																3.52	3.45	0.07
yr6	2008	33	33								1		1	1	1		10	16	3													4.05			
yr4	2005																																		
yr5	2006	40	40								5			9	18	8																3.43	3.44	-0.01	
yr6	2007	38	38											2	4	25	6	1													4.00	3.95	0.05		
yr5	2005																																		
yr6	2006	45	45											1	4	10	16	9	5													3.99	3.94	0.05	
yr6	2005																																		

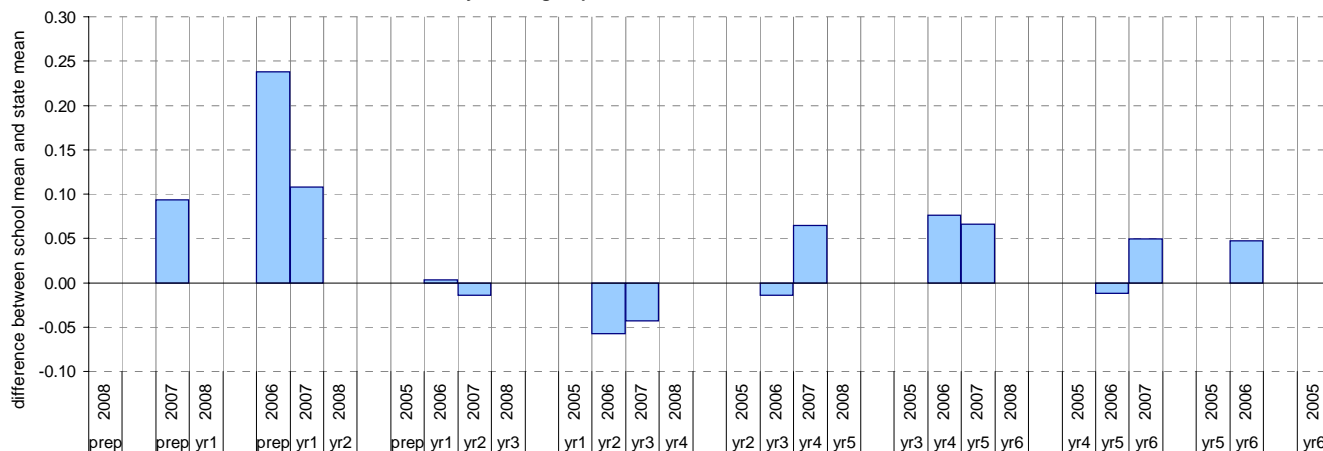
shading indicates a 'C' grade (at the expected standard) on the VELS scale.

<sup>1</sup> The total number of students eligible to be assessed. This figure will typically match, or be very close to, the Year Level enrolment.

<sup>2</sup> The number of students assessed against the VELS. The difference between this figure and the total (1) should be accounted for by students assessed against Individual Learning Plans and/or the ESL companion in the case of English.

\* Note: In 2006, approx. 850 schools assessed their students against the 0.25 VELS scale. 2006 benchmarks are therefore based on a subset of schools.

Difference between school mean and state mean\*, by cohort group



# Teacher Judgments against the VELS - English (primary)

**School no:** 4746  
**School name:** Banyule Primary School  
**Source of data:** Data retrieved electronically from CASES21.  
**Explanation:** Teacher judgments of student achievement against the VELS.

## Writing

Year Level	Year	Total <sup>1</sup>	Assessed <sup>2</sup>	Level 1			Level 2			Level 3			Level 4			Level 5			Level 6			Level 6E			School mean	State mean*	Difference between school and state mean*				
				0.00	0.50	1.00	1.25	1.50	1.75	2.00	2.25	2.50	2.75	3.00	3.25	3.50	3.75	4.00	4.25	4.50	4.75	5.00	5.25	5.50				5.75	6.00	6.25	6.50
prep	2008	36	35	1	15	7	11	1																			0.85				
prep	2007	22	22	2	6	11	3																				0.81	0.97	-0.16		
yr1	2008	18	18				7	9	2																		1.43				
prep	2006	20	20		3	9	6	2																			1.05	0.97	0.08		
yr1	2007	18	18				7	9	2																		1.43	1.49	-0.06		
yr2	2008	22	22					3	5	9	5																1.93				
prep	2005																														
yr1	2006	28	28				8	15	5																		1.47	1.47	0.00		
yr2	2007	30	30					4	13	13																	1.83	1.96	-0.14		
yr3	2008	25	25							2	6	13	4														2.44				
yr1	2005																														
yr2	2006	33	33						9	23		1															1.95	1.95	0.00		
yr3	2007	33	33						2		8	20	2	1													2.42	2.43	-0.01		
yr4	2008	33	33								1		5	22	5												2.98				
yr2	2005																														
yr3	2006	36	36					1		1	13	17	3	1													2.40	2.42	-0.02		
yr4	2007	35	35										9	20	5	1											2.99	2.91	0.08		
yr5	2008	36	36								1	1	1	6	21	4	2										3.44				
yr3	2005																														
yr4	2006	30	30								1	4	16		9												3.03	2.89	0.13		
yr5	2007	30	30								1	1		3	17	5	3										3.51	3.39	0.12		
yr6	2008	33	33								1		1	1	4	15	9	2									3.96				
yr4	2005																														
yr5	2006	40	40								2	5		9	20	4											3.37	3.38	-0.01		
yr6	2007	38	38											1	6	21	10										4.01	3.89	0.12		
yr5	2005																														
yr6	2006	45	45									1		6	12	13	9	3	1								3.94	3.88	0.06		
yr6	2005																														

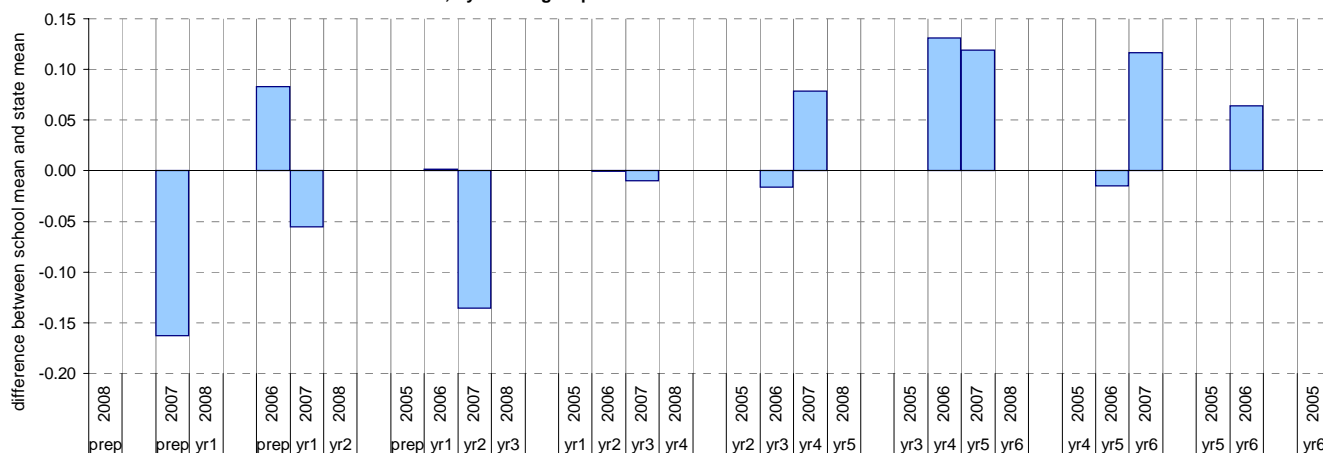
shading indicates a 'C' grade (at the expected standard) on the VELS scale.

<sup>1</sup> The total number of students eligible to be assessed. This figure will typically match, or be very close to, the Year Level enrolment.

<sup>2</sup> The number of students assessed against the VELS. The difference between this figure and the total (1) should be accounted for by students assessed against Individual Learning Plans and/or the ESL companion in the case of English.

\* Note: In 2006, approx. 850 schools assessed their students against the 0.25 VELS scale. 2006 benchmarks are therefore based on a subset of schools.

Difference between school mean and state mean\*, by cohort group



# Teacher Judgments against the VELS - English (primary)

**School no:** 4746  
**School name:** Banyule Primary School  
**Source of data:** Data retrieved electronically from CASES21.  
**Explanation:** Teacher judgments of student achievement against the VELS.

## Speaking and Listening

Year Level	Year	Total <sup>1</sup>	Assessed <sup>2</sup>	Level 1			Level 2			Level 3			Level 4			Level 5			Level 6			Level 6E			School mean	State mean*	Difference between school and state mean*			
				0.00	0.50	1.00	1.25	1.50	1.75	2.00	2.25	2.50	2.75	3.00	3.25	3.50	3.75	4.00	4.25	4.50	4.75	5.00	5.25	5.50				5.75	6.00	6.25
prep	2008	36	36	3	32		1																				0.97			
prep	2007	22	22	2	17		2	1																			1.00	0.97	0.03	
yr1	2008	18	18	2	13	3																					1.51			
prep	2006	20	20	1	12		5	1	1																		1.10	0.97	0.13	
yr1	2007	18	18	6	11	1																					1.43	1.48	-0.05	
yr2	2008	22	22			3	16	3																			2.00			
prep	2005																													
yr1	2006	28	28	1	5	22																					1.44	1.48	-0.04	
yr2	2007	30	30		1	8	21																				1.92	1.98	-0.06	
yr3	2008	25	25			1	1	4	16	3																	2.44			
yr1	2005																													
yr2	2006	33	33			3	30																				1.98	1.98	0.00	
yr3	2007	33	33			2	1	1	27	2																	2.45	2.46	-0.01	
yr4	2008	33	33					1	1	27	4																3.00			
yr2	2005																													
yr3	2006	36	36				2	4	29	1																	2.46	2.45	0.01	
yr4	2007	35	35					1	5	29																	2.95	2.94	0.01	
yr5	2008	36	36					2	2	29	3																3.48			
yr3	2005																													
yr4	2006	30	30				2	27	1																		2.99	2.94	0.05	
yr5	2007	30	30				1	1	2	24	3																3.48	3.43	0.05	
yr6	2008	33	33					1	1	2	26	3															3.95			
yr4	2005																													
yr5	2006	40	40				1		2	11	23	3															3.39	3.43	-0.04	
yr6	2007	38	38							1	7	25	5														3.97	3.94	0.03	
yr5	2005																													
yr6	2006	45	44							1	2	11	23	5	2												3.95	3.93	0.02	
yr6	2005																													

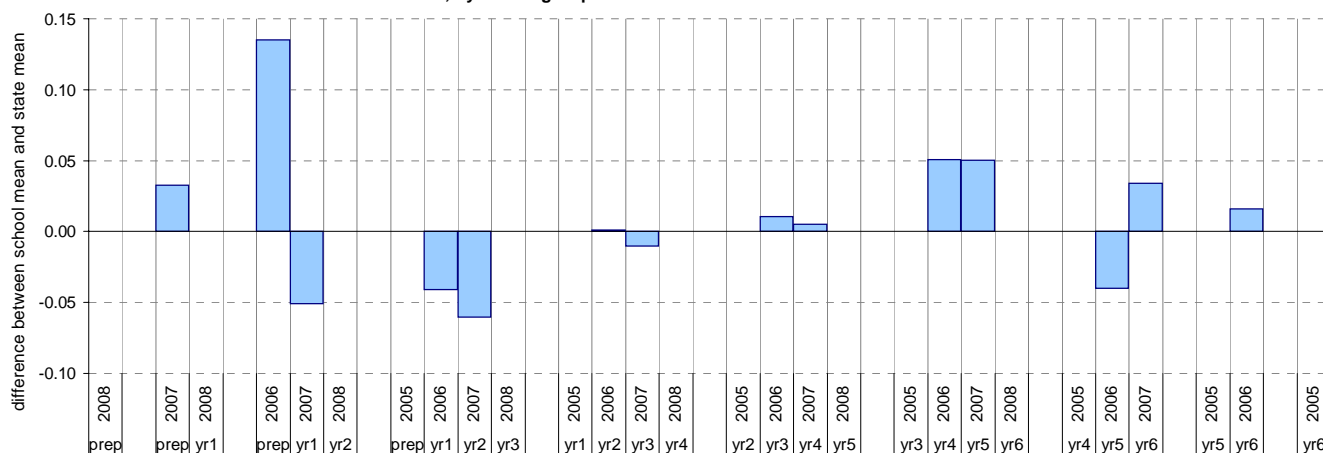
shading indicates a 'C' grade (at the expected standard) on the VELS scale.

<sup>1</sup> The total number of students eligible to be assessed. This figure will typically match, or be very close to, the Year Level enrolment.

<sup>2</sup> The number of students assessed against the VELS. The difference between this figure and the total (1) should be accounted for by students assessed against Individual Learning Plans and/or the ESL companion in the case of English.

\* Note: In 2006, approx. 850 schools assessed their students against the 0.25 VELS scale. 2006 benchmarks are therefore based on a subset of schools.

Difference between school mean and state mean\*, by cohort group



# Teacher Judgments against the VELS - Mathematics (primary)

**School no:** 4746  
**School name:** Banyule Primary School  
**Source of data:** Data retrieved electronically from CASES21.  
**Explanation:** Teacher judgments of student achievement against the VELS.

## Number

Year Level	Year	Total <sup>1</sup>	Assessed <sup>2</sup>	Level 1			Level 2			Level 3			Level 4			Level 5			Level 6			Level 6E			School mean	State mean*	Difference between school and state mean*								
				0.00	0.50	1.00	1.25	1.50	1.75	2.00	2.25	2.50	2.75	3.00	3.25	3.50	3.75	4.00	4.25	4.50	4.75	5.00	5.25	5.50				5.75	6.00	6.25	6.50	6.75			
prep	2008	36	36	3	19		12	2																			1.07								
prep	2007	22	22	1	15		4	2																			1.07	1.00	0.07						
yr1	2008	18	18			1	12	5																					1.56						
prep	2006	20	20	1	7		9	2	1																					1.17	1.00	0.18			
yr1	2007	18	18			5	8	5																						1.50	1.51	-0.01			
yr2	2008	22	22				1	4	9	8																					2.02				
prep	2005																																		
yr1	2006	28	28		1	7	13	4	3																						1.51	1.51	0.00		
yr2	2007	30	30				1	8	15	6																						1.97	1.99	-0.03	
yr3	2008	25	25						1	4	13	7																				2.51			
yr1	2005																																		
yr2	2006	33	33				1	5	22	5																						1.98	1.99	0.00	
yr3	2007	33	33					2	1	5	23	2																					2.42	2.48	-0.06
yr4	2008	33	33							2	4	17	7	3																			3.04		
yr2	2005																																		
yr3	2006	36	36					4		8	20	4																					2.42	2.46	-0.05
yr4	2007	35	35							2	2	25	5	1																			3.01	2.96	0.05
yr5	2008	36	36							1	2	9	21	3																			3.41		
yr3	2005																																		
yr4	2006	30	30							1	12	16	1																				3.14	2.95	0.19
yr5	2007	30	30							1	1	2	13	3	10																		3.63	3.44	0.18
yr6	2008	33	33							2		1	3	13	8	6																	4.03		
yr4	2005																																		
yr5	2006	40	40							1	3	6	23	7																			3.44	3.43	0.01
yr6	2007	38	38								1	1	3	6	16	11																	3.95	3.95	0.00
yr5	2005																																		
yr6	2006	45	45										4	15	18	4	4																3.94	3.93	0.01
yr6	2005																																		

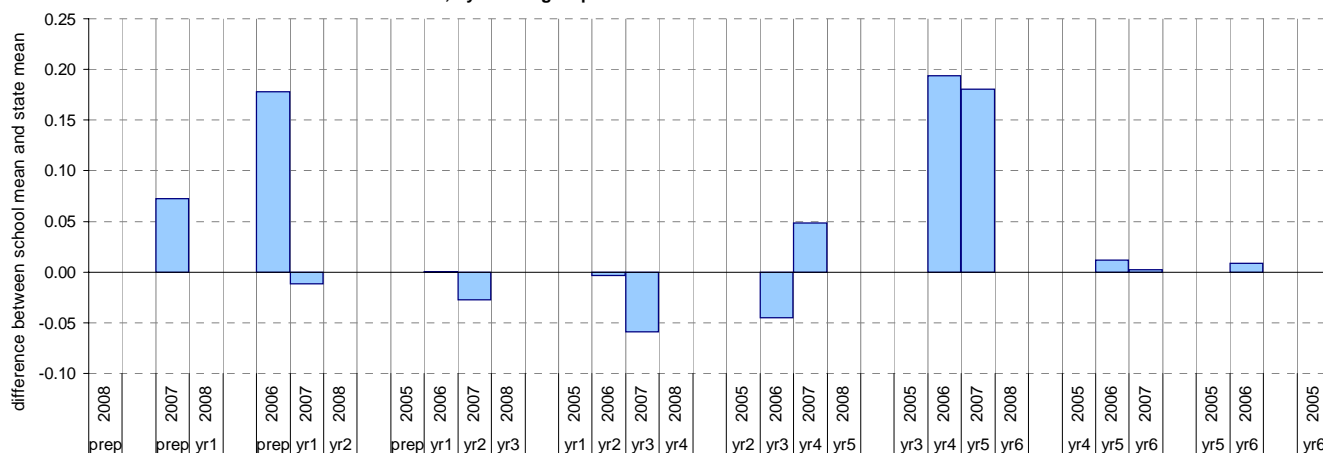
shading indicates a 'C' grade (at the expected standard) on the VELS scale.

<sup>1</sup> The total number of students eligible to be assessed. This figure will typically match, or be very close to, the Year Level enrolment.

<sup>2</sup> The number of students assessed against the VELS. The difference between this figure and the total (1) should be accounted for by students assessed against Individual Learning Plans and/or the ESL companion in the case of English.

\* Note: In 2006, approx. 850 schools assessed their students against the 0.25 VELS scale. 2006 benchmarks are therefore based on a subset of schools.

Difference between school mean and state mean\*, by cohort group



# Teacher Judgments against the VELS - Mathematics (primary)

**School no:** 4746  
**School name:** Banyule Primary School  
**Source of data:** Data retrieved electronically from CASES21.  
**Explanation:** Teacher judgments of student achievement against the VELS.

## Measurement, Chance and Data

Year Level	Year	Total <sup>1</sup>	Assessed <sup>2</sup>	Level 1			Level 2			Level 3			Level 4			Level 5			Level 6			Level 6E			School mean	State mean*	Difference between school and state mean*				
				0.00	0.50	1.00	1.25	1.50	1.75	2.00	2.25	2.50	2.75	3.00	3.25	3.50	3.75	4.00	4.25	4.50	4.75	5.00	5.25	5.50				5.75	6.00	6.25	6.50
prep	2008	36	36	1	32		2	1																			1.01				
prep	2007	22	22	1	17		2	2																			1.05	0.97	0.07		
yr1	2008	18	18	1	15	2																					1.51				
prep	2006	20	20	1	7		10	1	1																		1.16	0.97	0.19		
yr1	2007	18	18				4	13	1																		1.46	1.49	-0.03		
yr2	2008	22	22				1	3	14	4																	1.99				
prep	2005																														
yr1	2006	28	28				5	20	2	1																	1.49	1.48	0.01		
yr2	2007	30	30				1	6	23																		1.93	1.98	-0.04		
yr3	2008	25	25						2	2	17	4															2.48				
yr1	2005																														
yr2	2006	33	33						1	32																	1.99	1.97	0.02		
yr3	2007	33	33						2	1		30															2.44	2.46	-0.02		
yr4	2008	33	33								2	23	7	1													3.04				
yr2	2005																														
yr3	2006	36	36						4		8	22	2														2.40	2.45	-0.04		
yr4	2007	35	35								1	2	30	2													2.99	2.95	0.04		
yr5	2008	36	36									1	1	6	28												3.42				
yr3	2005																														
yr4	2006	30	30								1	13	15	1													3.13	2.94	0.19		
yr5	2007	30	30								1	1	2	15	8	3											3.55	3.43	0.12		
yr6	2008	33	33								1	1	1	2	18	8	2										3.95				
yr4	2005																														
yr5	2006	40	40								1		11	22	6												3.44	3.42	0.02		
yr6	2007	38	38									1	1	2	7	21	6										3.92	3.93	-0.01		
yr5	2005																														
yr6	2006	45	45											4	15	19	2	5									3.94	3.92	0.02		
yr6	2005																														

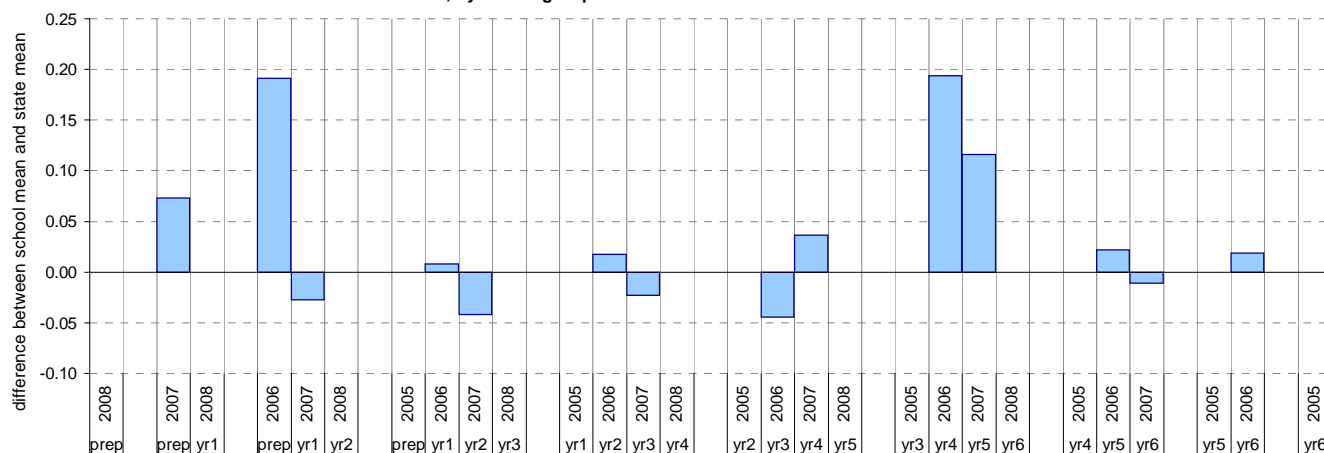
shading indicates a 'C' grade (at the expected standard) on the VELS scale.

<sup>1</sup> The total number of students eligible to be assessed. This figure will typically match, or be very close to, the Year Level enrolment.

<sup>2</sup> The number of students assessed against the VELS. The difference between this figure and the total (1) should be accounted for by students assessed against Individual Learning Plans and/or the ESL companion in the case of English.

\* Note: In 2006, approx. 850 schools assessed their students against the 0.25 VELS scale. 2006 benchmarks are therefore based on a subset of schools.

Difference between school mean and state mean\*, by cohort group



# NAPLAN Year 3 and 5: Reading

School no: 4746

School name: Banyule Primary School

Source of data: Victorian Curriculum and Assessment Authority.

Explanation: The National Assessment Program - Literacy and Numeracy (NAPLAN) is conducted each year for students in Years 3, 5, 7 and 9. For more detailed NAPLAN data, refer to the NAPLAN Data Service website at <http://naplands.vcaa.vic.edu.au>. A reference guide for analysing NAPLAN data is available at <http://www.vcaa.vic.edu.au/vcaa/prep10/naplan/schools/analysingnaplandata.pdf>.

Notes: \* % student participation = (students who participated in NAPLAN / February enrolments) \* 100

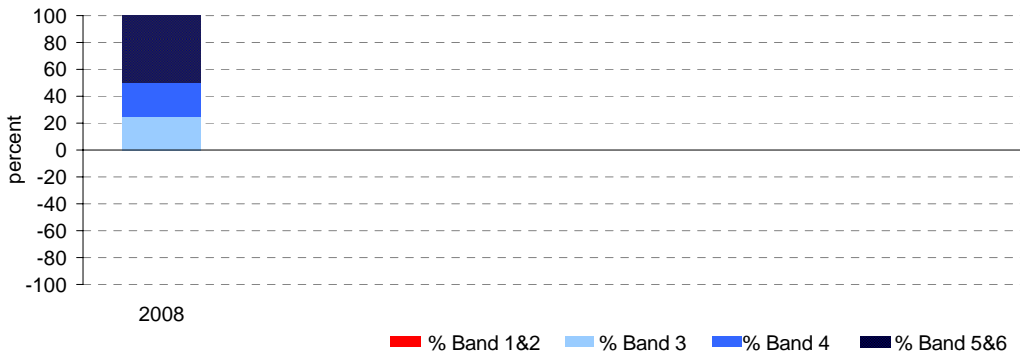
## Year 3

student participation			Percent of students by NAP Band						Mean Scaled Score	
(n)	(%)*		Band 1	Band 2	Band 3	Band 4	Band 5	Band 6	School	State
2008	20	75	0	0	25	25	30	20	439.9	415.8

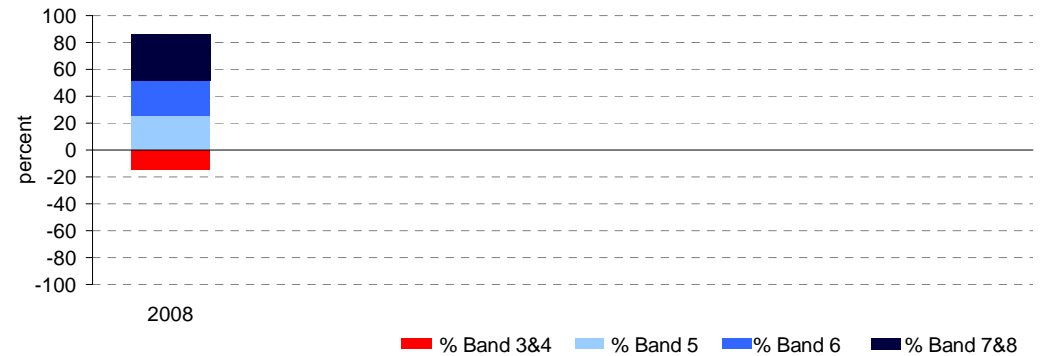
## Year 5

student participation			Percent of students by NAP Band						Mean Scaled Score	
(n)	(%)*		Band 3	Band 4	Band 5	Band 6	Band 7	Band 8	School	State
2008	35	100	6	9	26	26	23	11	504.2	492.1

Percent of students by NAP Band

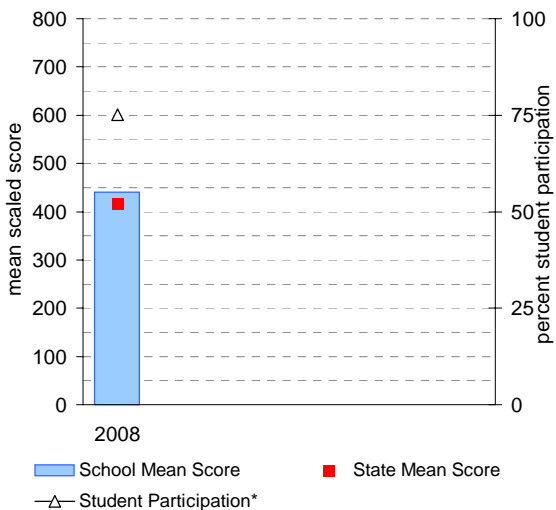


Percent of students by NAP Band

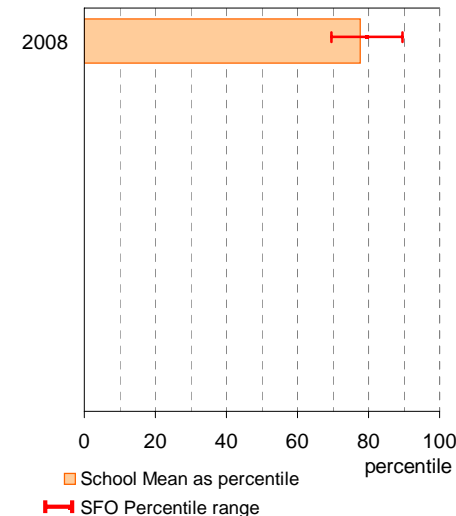


## Year 3

School Mean against State Mean, including Participation

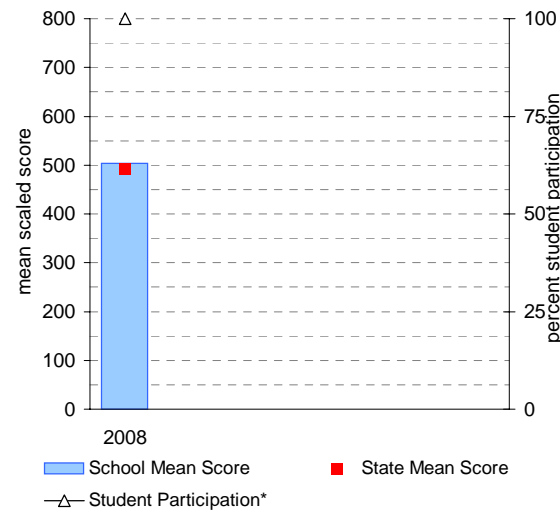


School Mean as percentile against SFO percentile range

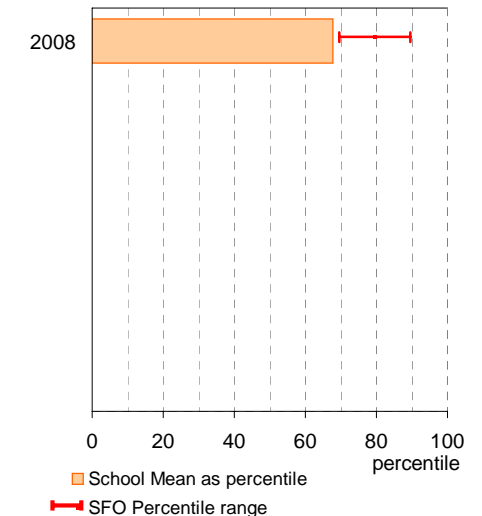


## Year 5

School Mean against State Mean, including Participation



School Mean as percentile against SFO percentile range



# NAPLAN Year 3 and 5: Writing

School no: 4746

School name: Banyule Primary School

Source of data: Victorian Curriculum and Assessment Authority.

Explanation: The National Assessment Program - Literacy and Numeracy (NAPLAN) is conducted each year for students in Years 3, 5, 7 and 9. For more detailed NAPLAN data, refer to the NAPLAN Data Service website at <http://naplands.vcaa.vic.edu.au>. A reference guide for analysing NAPLAN data is available at <http://www.vcaa.vic.edu.au/vcaa/prep10/naplan/schools/analysingnaplandata.pdf>.

Notes: \* % student participation = (students who participated in NAPLAN / February enrolments) \* 100

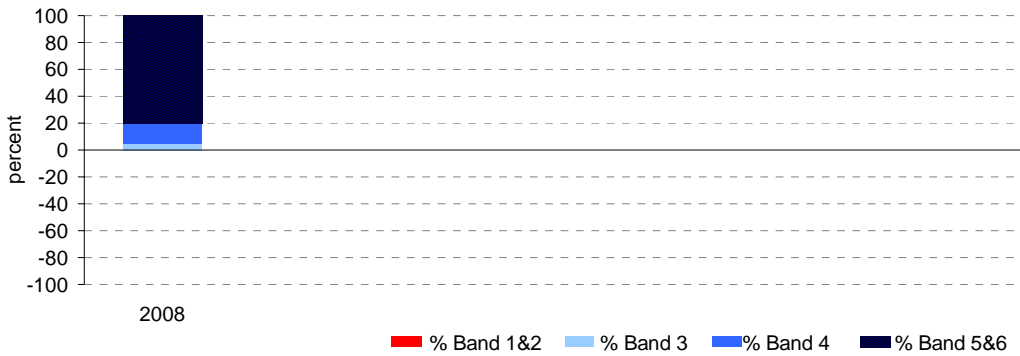
## Year 3

	student participation		Percent of students by NAP Band						Mean Scaled Score	
	(n)	(%)*	Band 1	Band 2	Band 3	Band 4	Band 5	Band 6	School	State
2008	20	75	0	0	5	15	45	35	456.6	421.2

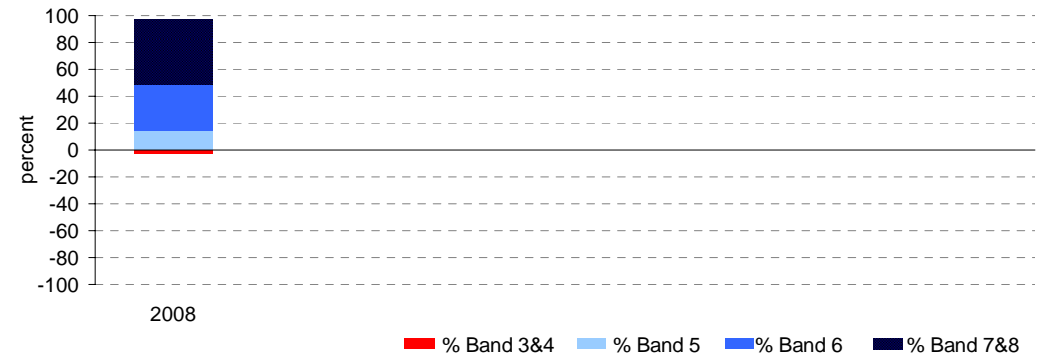
## Year 5

	student participation		Percent of students by NAP Band						Mean Scaled Score	
	(n)	(%)*	Band 3	Band 4	Band 5	Band 6	Band 7	Band 8	School	State
2008	35	100	0	3	14	34	17	31	534.3	496.0

Percent of students by NAP Band

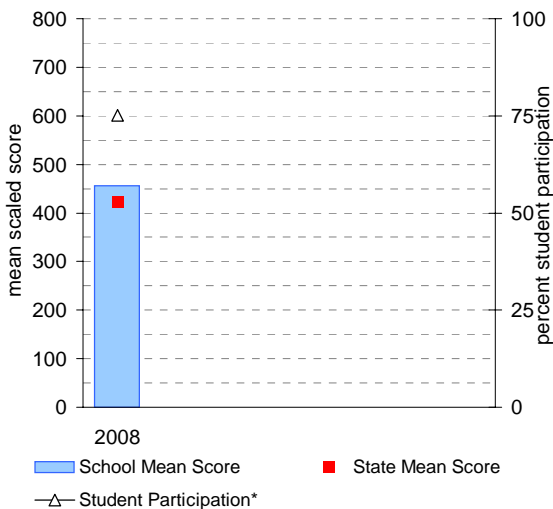


Percent of students by NAP Band

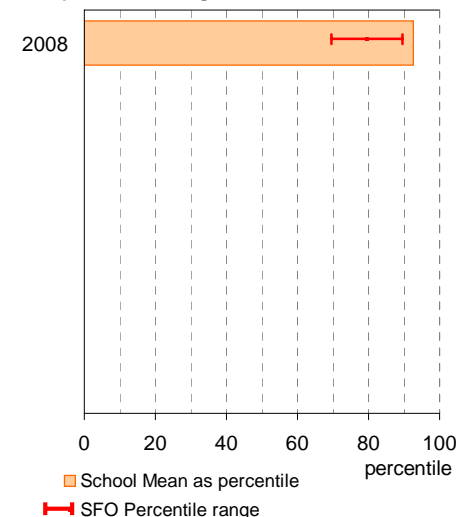


## Year 3

School Mean against State Mean, including Participation

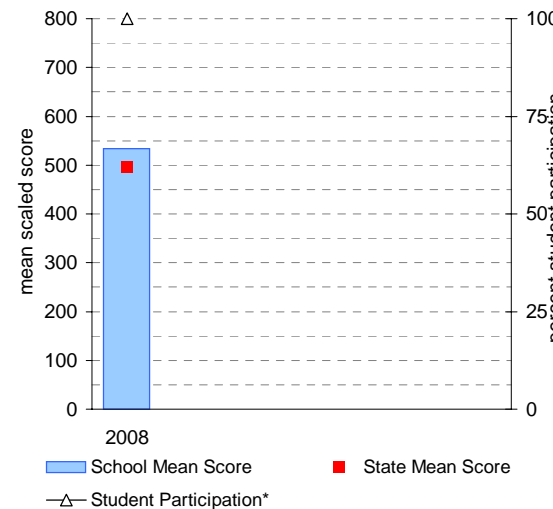


School Mean as percentile against SFO percentile range

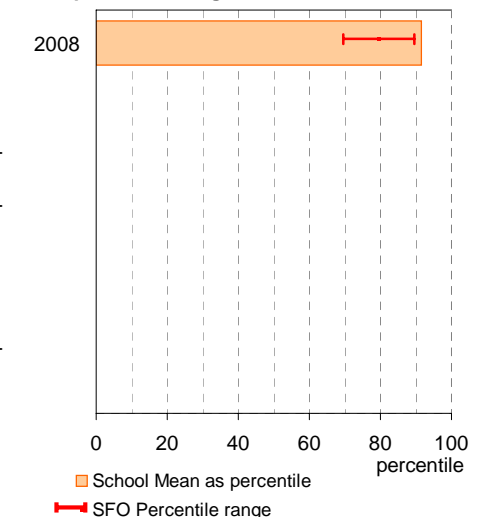


## Year 5

School Mean against State Mean, including Participation



School Mean as percentile against SFO percentile range



# NAPLAN Year 3 and 5: Numeracy

School no: 4746

School name: Banyule Primary School

Source of data: Victorian Curriculum and Assessment Authority.

Explanation: The National Assessment Program - Literacy and Numeracy (NAPLAN) is conducted each year for students in Years 3, 5, 7 and 9. For more detailed NAPLAN data, refer to the NAPLAN Data Service website at <http://naplands.vcaa.vic.edu.au>. A reference guide for analysing NAPLAN data is available at <http://www.vcaa.vic.edu.au/vcaa/prep10/naplan/schools/analysingnaplandata.pdf>.

Notes: \* % student participation = (students who participated in NAPLAN / February enrolments) \* 100

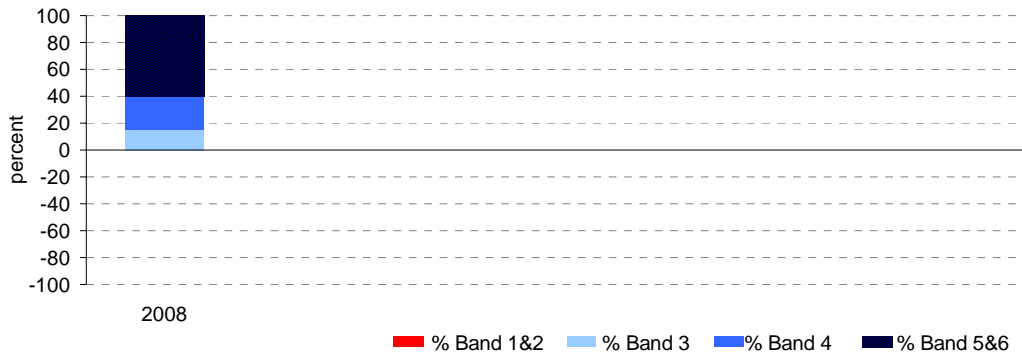
## Year 3

	student participation		Percent of students by NAP Band						Mean Scaled Score	
	(n)	(%)*	Band 1	Band 2	Band 3	Band 4	Band 5	Band 6	School	State
2008	20	75	0	0	15	25	35	25	433.3	416.1

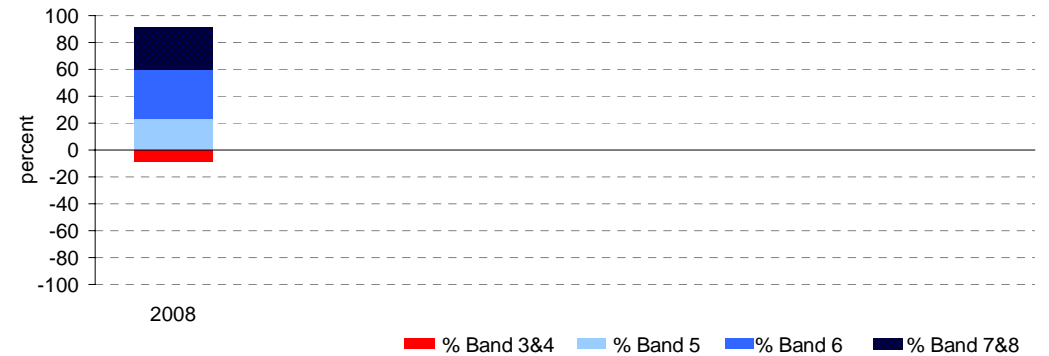
## Year 5

	student participation		Percent of students by NAP Band						Mean Scaled Score	
	(n)	(%)*	Band 3	Band 4	Band 5	Band 6	Band 7	Band 8	School	State
2008	35	100	3	6	23	37	20	11	509.6	487.8

Percent of students by NAP Band

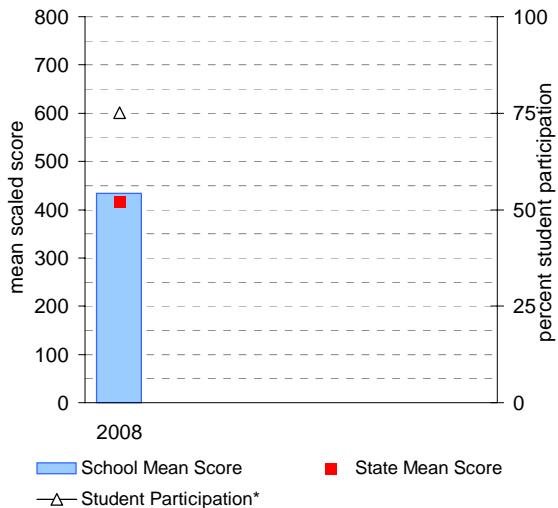


Percent of students by NAP Band

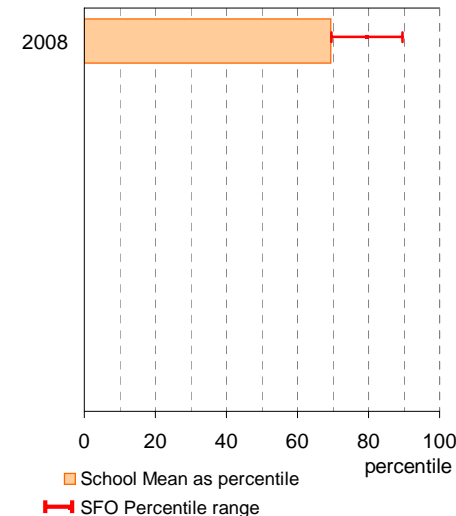


## Year 3

School Mean against State Mean, including Participation

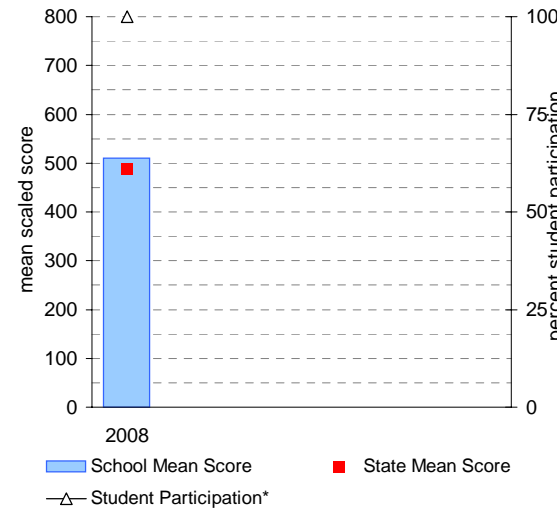


School Mean as percentile against SFO percentile range

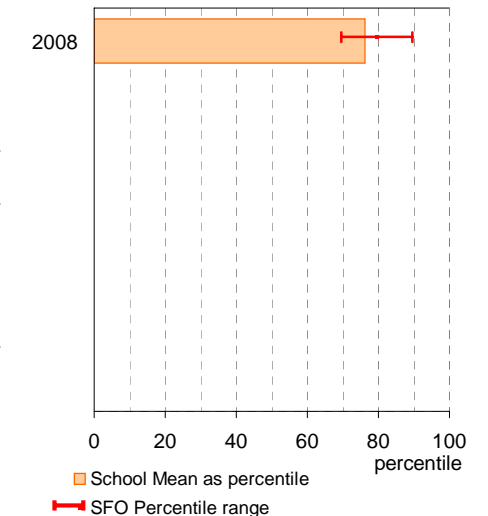


## Year 5

School Mean against State Mean, including Participation



School Mean as percentile against SFO percentile range



# AIM Year 3 and 5: Reading

School no: 4746

School name: Banyule Primary School

Source of data: Victorian Curriculum and Assessment Authority.

Explanation: The Achievement Improvement Monitor (AIM) was a statewide assessment program conducted each year up until and including 2007 for students in Years 3, 5, 7 and 9. This has now been replaced by NAPLAN. For more detailed AIM data, refer to the AIM Data Service website at <http://aimds.vcaa.vic.edu.au>.

Notes: \* The school trendline is only plotted when there is data for each calendar year.  
 \*\* % student participation = (students who participated in AIM / Feb enrolments) \* 100

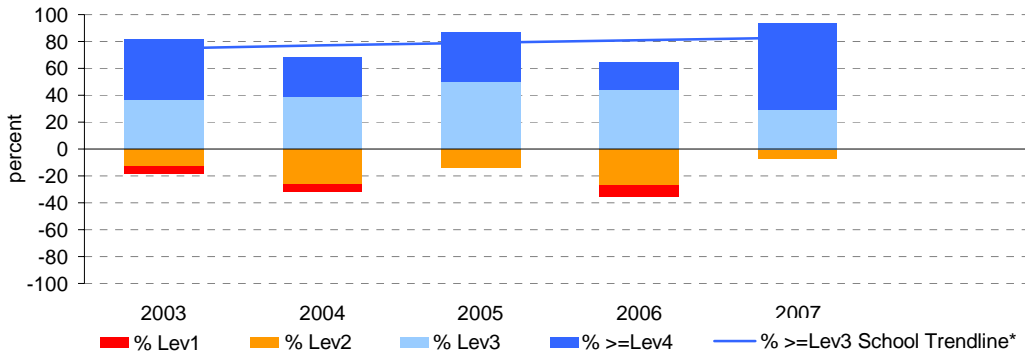
## Year 3

	student participation		Percent of students by VEL5 level							Mean CSF / VEL5 Score	
	(n)	(%)**	Lev1	Lev2	Lev3	Lev4	Lev5	Lev6	Lev6E	School	State
2003	38	81	5	13	37	45	0	0	0	2.8	2.3
2004	41	95	5	27	39	29	0	0	0	2.4	2.3
2005	30	79	0	13	50	37	0	0	0	2.7	2.4
2006	34	89	9	26	44	21	0	0	0	2.3	2.3
2007	31	91	0	6	29	65	0	0	0	3.0	2.3

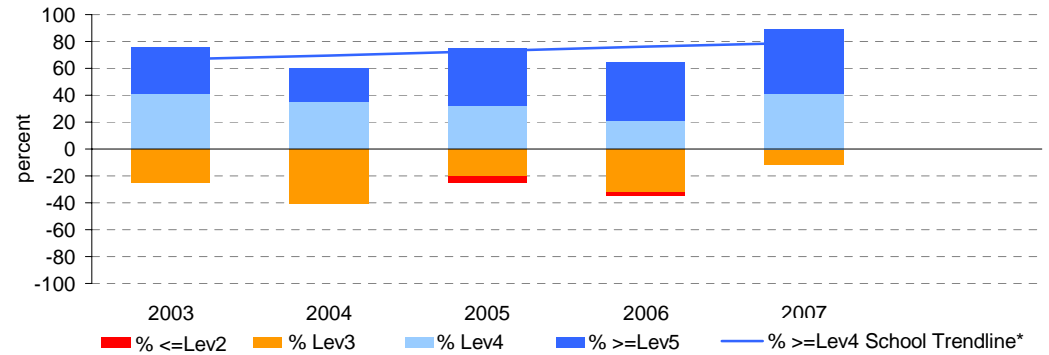
## Year 5

	student participation		Percent of students by VEL5 level							Mean CSF / VEL5 Score	
	(n)	(%)**	Lev1	Lev2	Lev3	Lev4	Lev5	Lev6	Lev6E	School	State
2003	41	93	0	0	24	41	34	0	0	3.6	3.2
2004	40	95	0	0	40	35	25	0	0	3.3	3.2
2005	44	92	0	5	20	32	43	0	0	3.6	3.2
2006	37	88	0	3	32	22	43	0	0	3.6	3.1
2007	27	87	0	0	11	41	48	0	0	3.8	3.2

Percent of students by VEL5 level

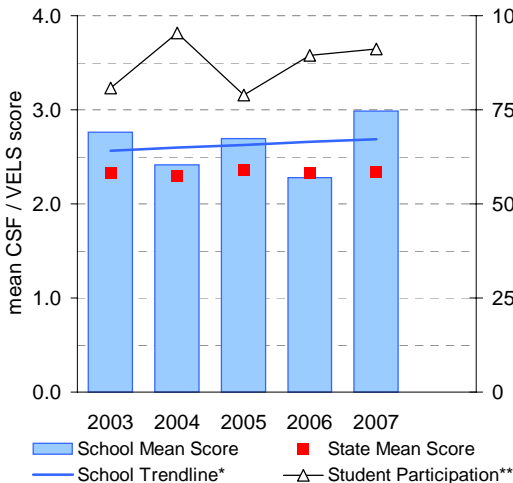


Percent of students by VEL5 level

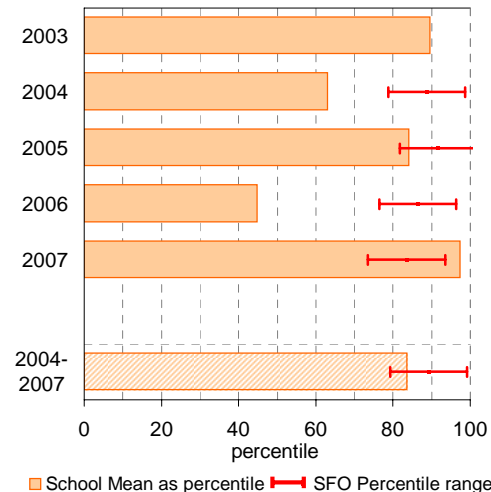


## Year 3

School Mean against State Mean, including Participation

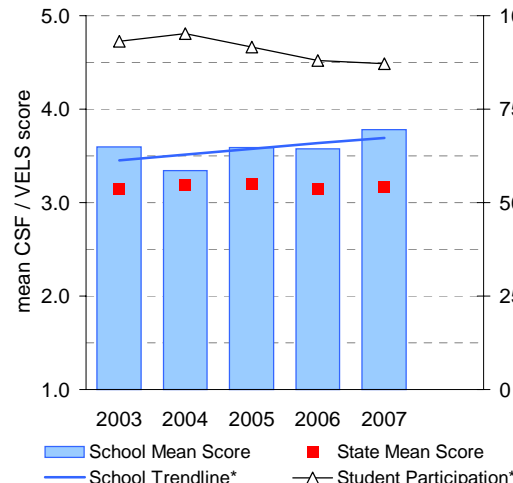


School Mean as percentile against SFO percentile range

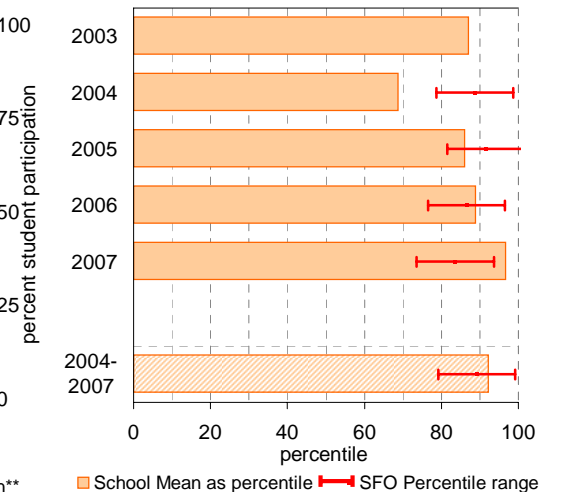


## Year 5

School Mean against State Mean, including Participation



School Mean as percentile against SFO percentile range



# AIM Year 3 and 5: Number

School no: 4746

School name: Banyule Primary School

Source of data: Victorian Curriculum and Assessment Authority.

Explanation: The Achievement Improvement Monitor (AIM) was a statewide assessment program conducted each year up until and including 2007 for students in Years 3, 5, 7 and 9. This has now been replaced by NAPLAN. For more detailed AIM data, refer to the AIM Data Service website at <http://aimds.vcaa.vic.edu.au>.

Notes: \* The school trendline is only plotted when there is data for each calendar year.  
 \*\* % student participation = (students who participated in AIM / Feb enrolments) \* 100

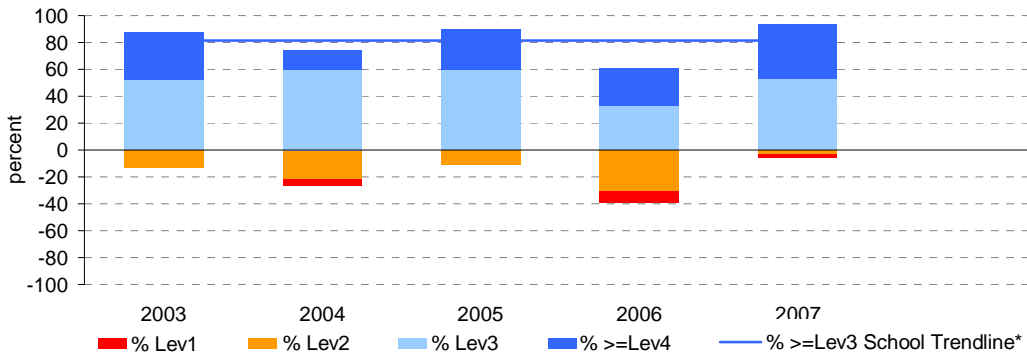
## Year 3

	student participation		Percent of students by VEL5 level							Mean CSF / VEL5 Score	
	(n)	(%)**	Lev1	Lev2	Lev3	Lev4	Lev5	Lev6	Lev6E	School	State
2003	40	85	0	13	53	35	0	0	0	2.7	2.4
2004	42	98	5	21	60	14	0	0	0	2.3	2.4
2005	30	79	0	10	60	30	0	0	0	2.7	2.4
2006	36	95	8	31	33	28	0	0	0	2.3	2.4
2007	32	94	3	3	53	41	0	0	0	2.8	2.4

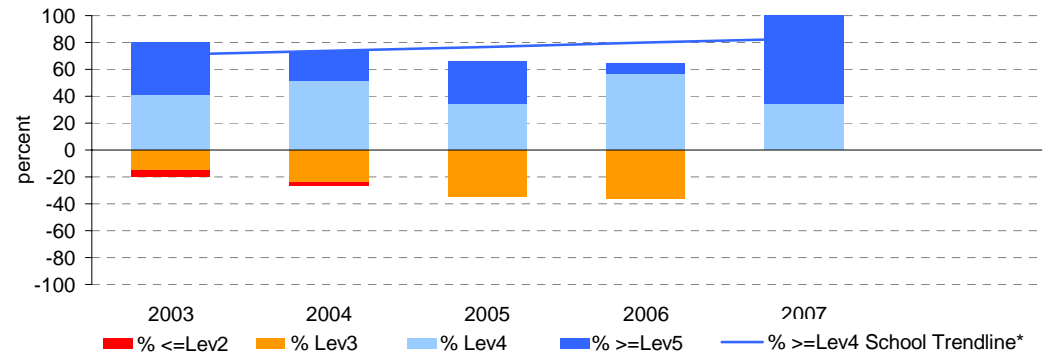
## Year 5

	student participation		Percent of students by VEL5 level							Mean CSF / VEL5 Score	
	(n)	(%)**	Lev1	Lev2	Lev3	Lev4	Lev5	Lev6	Lev6E	School	State
2003	41	93	0	5	15	41	39	0	0	3.5	3.1
2004	41	98	0	2	24	51	22	0	0	3.4	3.2
2005	44	92	0	0	34	34	32	0	0	3.5	3.2
2006	37	88	0	0	35	57	8	0	0	3.3	3.2
2007	29	94	0	0	0	34	66	0	0	4.2	3.2

Percent of students by VEL5 level

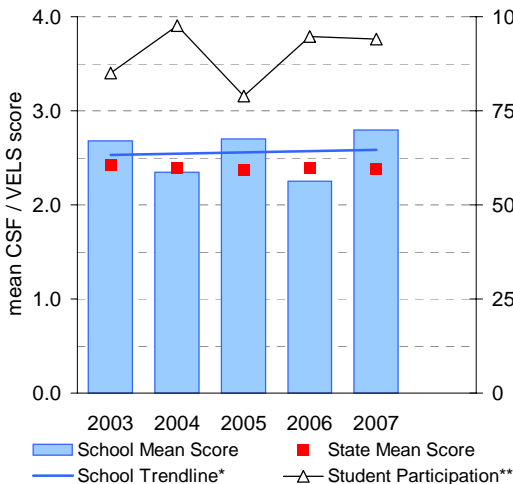


Percent of students by VEL5 level

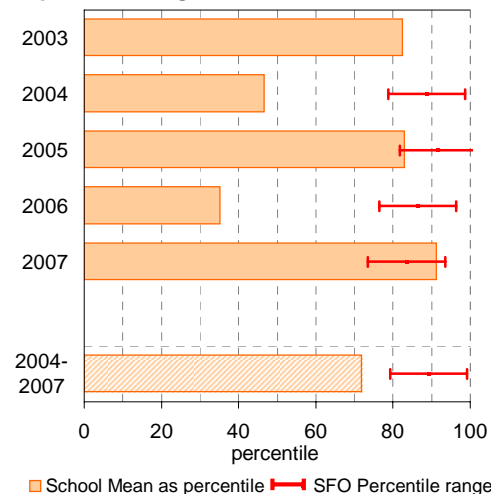


## Year 3

School Mean against State Mean, including Participation

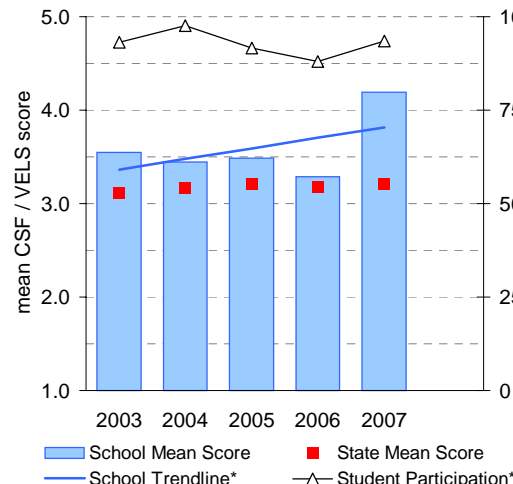


School Mean as percentile against SFO percentile range

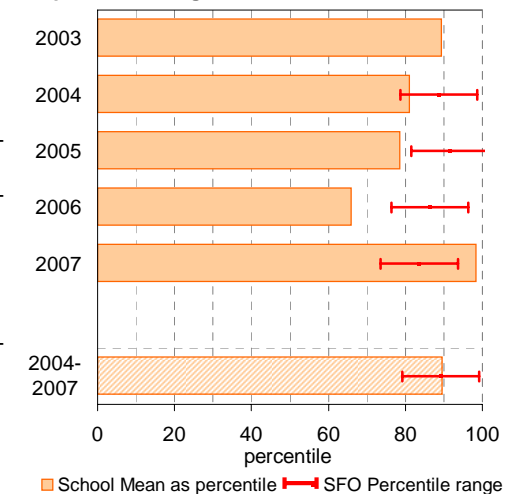


## Year 5

School Mean against State Mean, including Participation



School Mean as percentile against SFO percentile range



# Teacher Assessment of Student Progress (PSD students)

**School no:** 4746

**School name:** Banyule Primary School

**Explanation:** Teachers assess their students' progress against the 8 VELS Domains / CSF KLAs using a 6-point scale (students in special schools and those who cannot be assessed against the VELS / CSF).

**Source of data:** Data transmitted from school to DEECD via an online web-form.

	No progress (%)	Little progress (%)	Satisfactory progress (%)	Good progress (%)	Very good progress (%)	Excellent progress (%)	Total students assessed <sup>1</sup> (no.)
--	--------------------	---------------------------	---------------------------------	-------------------------	------------------------------	------------------------------	--

## 2004 (by CSF KLA)

English  
Mathematics  
Science  
Technology  
The Arts  
H&PE  
SOSE

## 2005 (by CSF KLA)

English  
Mathematics  
Science  
Technology  
The Arts  
H&PE  
SOSE

## 2006 (by VELS Domain)

English  
Mathematics  
Science  
ICT  
The Arts  
H&PE  
Civics & Citizenship

## 2007 (by VELS Domain)

English  
Mathematics  
Science  
ICT  
The Arts  
H&PE  
Civics & Citizenship

## 2008 (by VELS Domain)

English  
Mathematics  
Science  
ICT  
The Arts  
H&PE  
Civics & Citizenship

## 2007 Primary state benchmarks (by VELS Domain)\*

English	1	21	32	26	13	6
Mathematics	2	21	33	23	15	7
Science	4	19	47	18	8	4
ICT	1	17	43	17	14	8
The Arts	2	14	44	24	10	5
H&PE	2	15	37	26	15	5
Civics & Citizenship	3	24	34	22	12	5

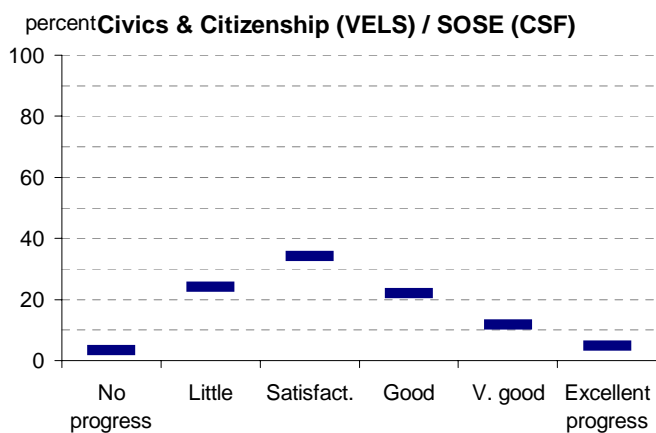
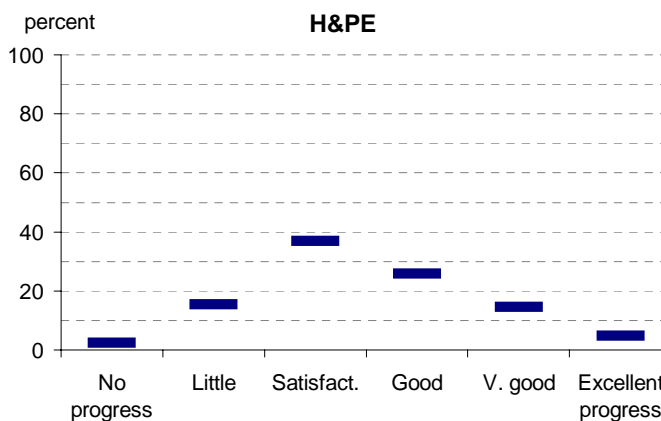
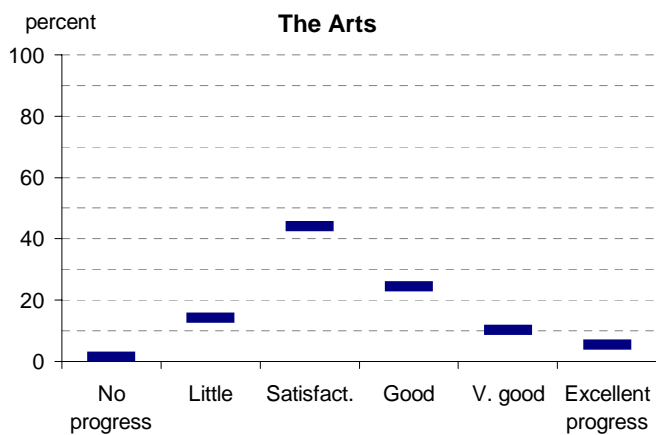
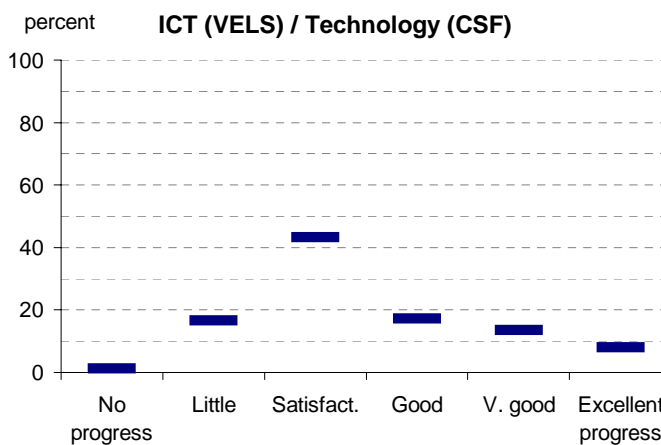
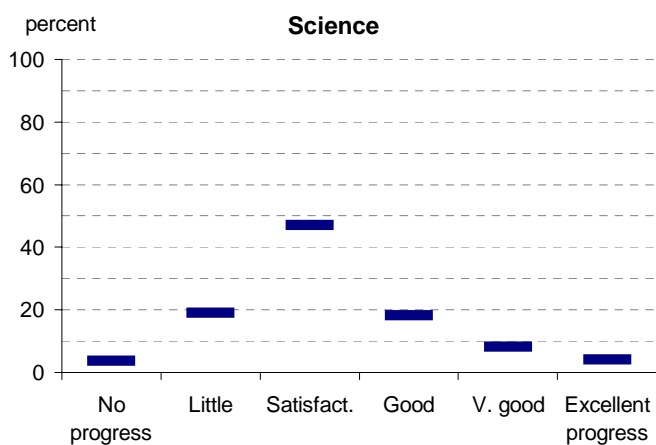
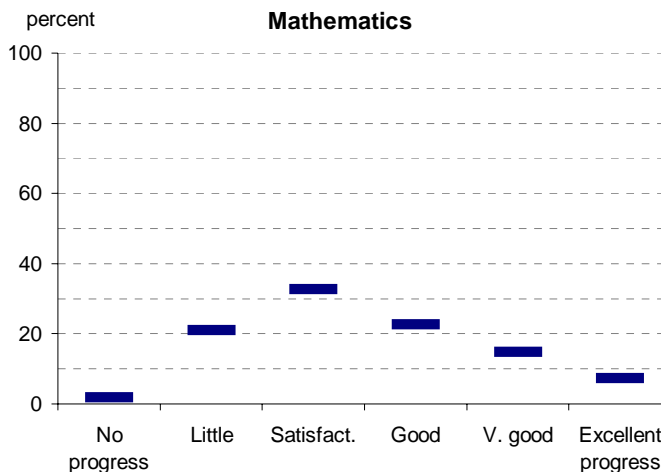
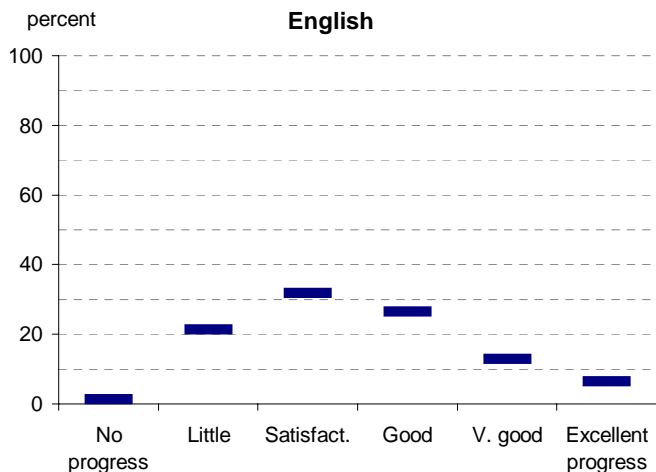
Notes: <sup>1</sup> If schools provided percentages only, it is not possible to report the number of students assessed. In these cases, the total percentage (100) will be shown.

\* 2008 benchmarks will be calculated in August, when data from all schools has been submitted.

# Teacher Assessment of Student Progress (PSD students)

School no: 4746

School name: Banyule Primary School



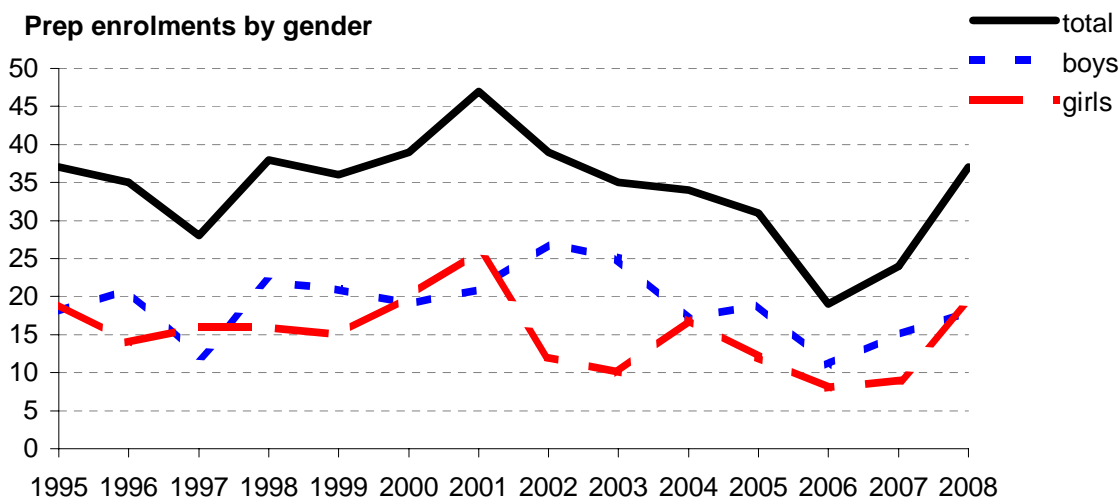
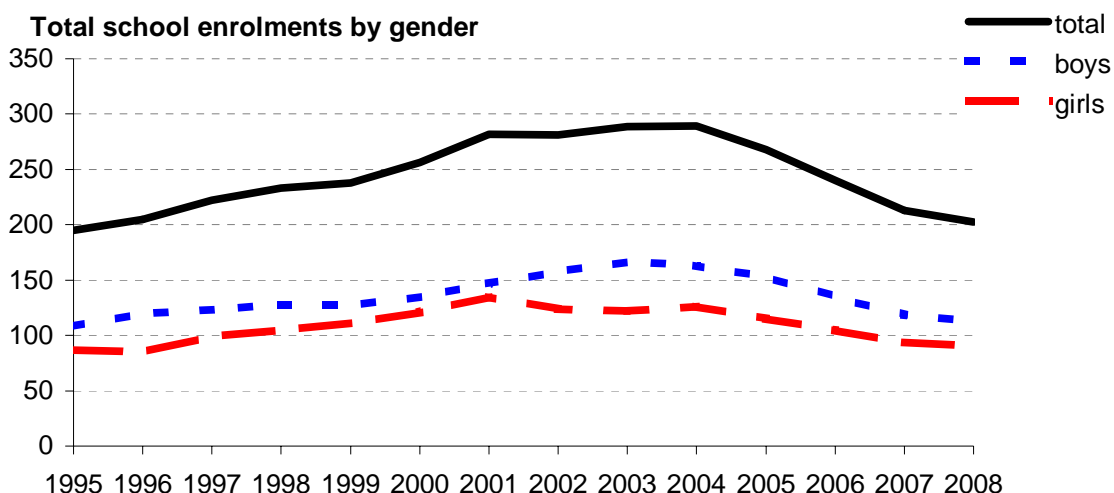
- 2004 (by CSF KLA)
- 2005 (by CSF KLA)
- 2006 (by VELS Domain)
- 2007 (by VELS Domain)
- 2008 (by VELS Domain)
- 2007 Primary state benchmarks (by VELS Domain)\*

Notes: \* 2008 benchmarks will be calculated in August, when data from all schools has been submitted.

# Enrolments

**School no:** 4746  
**School name:** Banyule Primary School  
**Explanation:** Enrolments at February census.  
**Source of data:** February census.

Year	Total school enrolment			Prep enrolment			Year 7 enrolments		
	boys	girls	total	boys	girls	total	boys	girls	total
1995	108	87	195	18	19	37			
1996	120	85	205	21	14	35			
1997	123	99	222	12	16	28			
1998	128	105	233	22	16	38			
1999	127	111	238	21	15	36			
2000	135	121	256	19	20	39			
2001	147	135	282	21	26	47			
2002	157	124	281	27	12	39			
2003	166	122	288	25	10	35			
2004	163	126	289	17	17	34			
2005	153	115	268	19	12	31			
2006	135	105	240	11	8	19			
2007	119	94	213	15	9	24			
2008	113	90	203	18	19	37			



# Student Absence

School no: 4746

School name: Banyule Primary School

Source of data: Data retrieved electronically from CASES21.

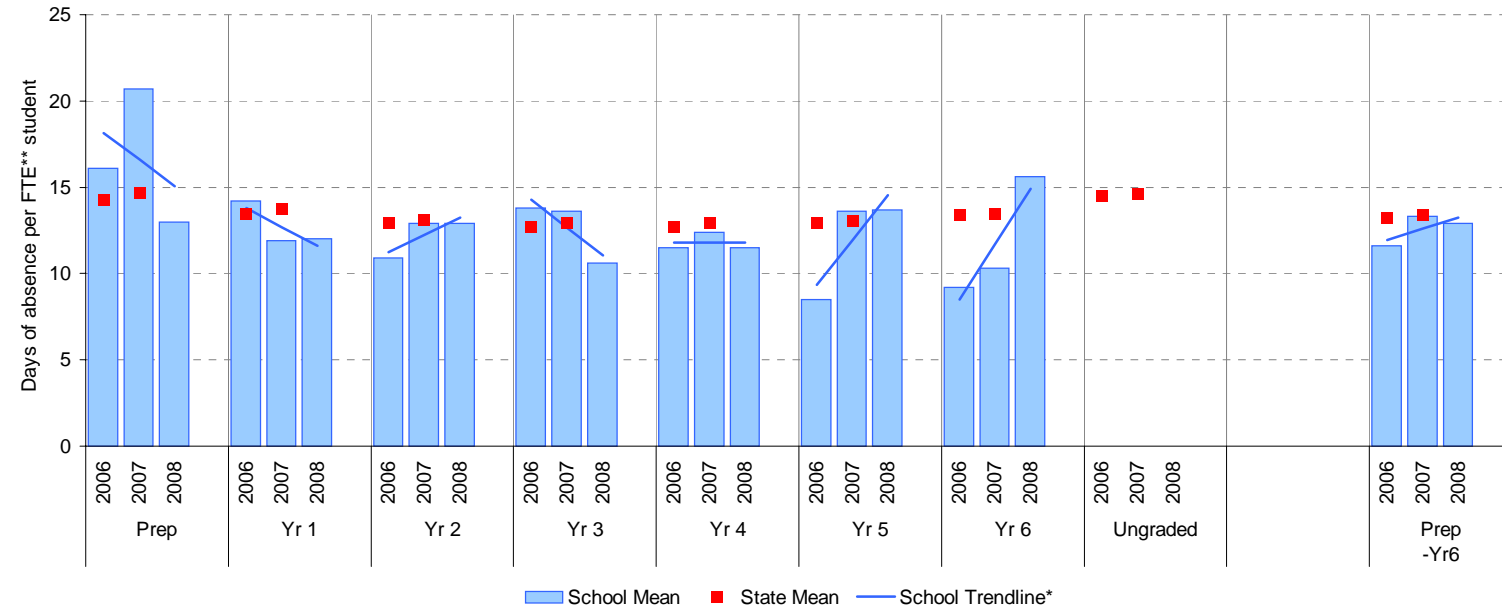
Explanation: The average (mean) number of absent days† per FTE\*\* student.

Note that 20 absent days equates to 1 absent day per fortnight, and 10 absent days to 1 absent day per month.

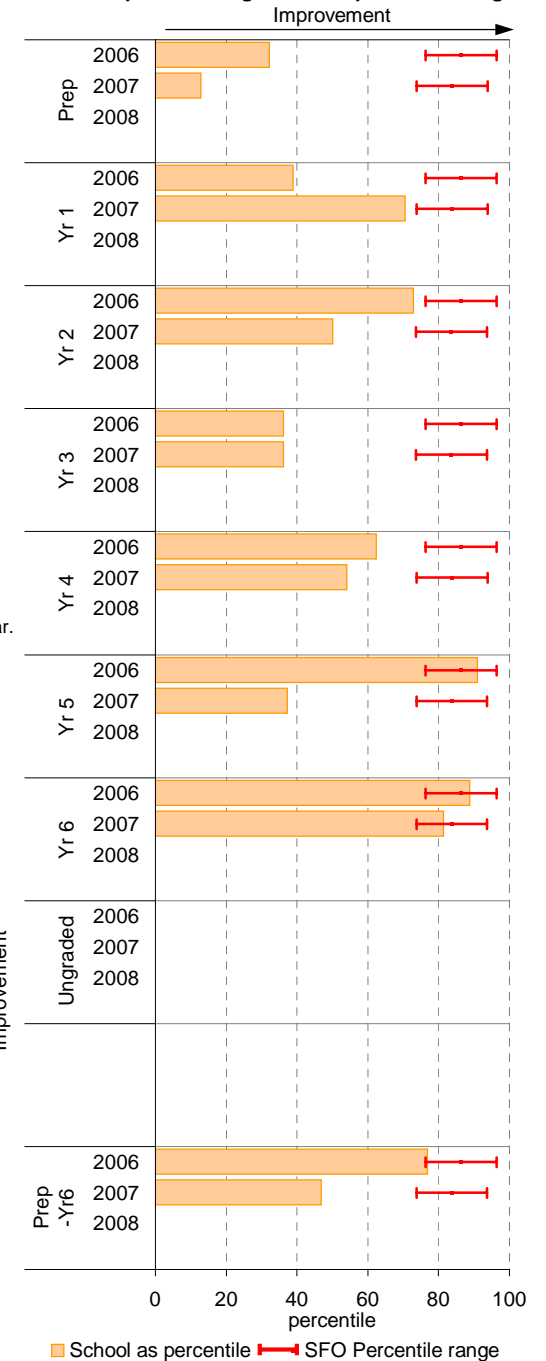
	School						2007 state benchmark^		
	2006		2007		2008		25th ptile	Mean	75th ptile
	Enrolments	Avg absent days / FTE** student	Enrolments	Avg absent days / FTE** student	Enrolments	Avg absent days / FTE** student			
Prep	19.2	16.1	22.5	20.7	35.6	13	12.0	14.6	17.7
Yr 1	30.5	14.2	18.0	11.9	18.9	12	11.5	13.8	16.1
Yr 2	32.8	10.9	30.4	12.9	21.4	12.9	11.0	13.1	15.1
Yr 3	37.1	13.8	34.6	13.6	24.6	10.6	10.8	12.9	14.9
Yr 4	31.4	11.5	36.4	12.4	32.2	11.5	10.8	12.9	15.0
Yr 5	40.2	8.5	31.0	13.6	36.0	13.7	10.6	13.1	15.0
Yr 6	46.0	9.2	37.5	10.3	33.0	15.6	11.0	13.4	15.7
Ungraded								14.6	
P-6 mean		11.6		13.3		12.9		13.4	

Notes: † Includes non-curriculum absences only (absence codes 200, 201, 202, 203, 205, 206, 207, 208, 209, 210, 211, 300, 401, 500, 700, 800, 804, 805, 900).  
 \* The school trendline is only plotted when there is data for each calendar year.  
 \*\* FTE = Full Time Equivalent (including part-time and part-year fractions).  
 ^ 2008 benchmarks and percentiles will be calculated in August, when data from all schools has been submitted.

School Mean against State Mean^



School Mean as percentile against SFO percentile range^



# Parent Opinion

School no: 4746

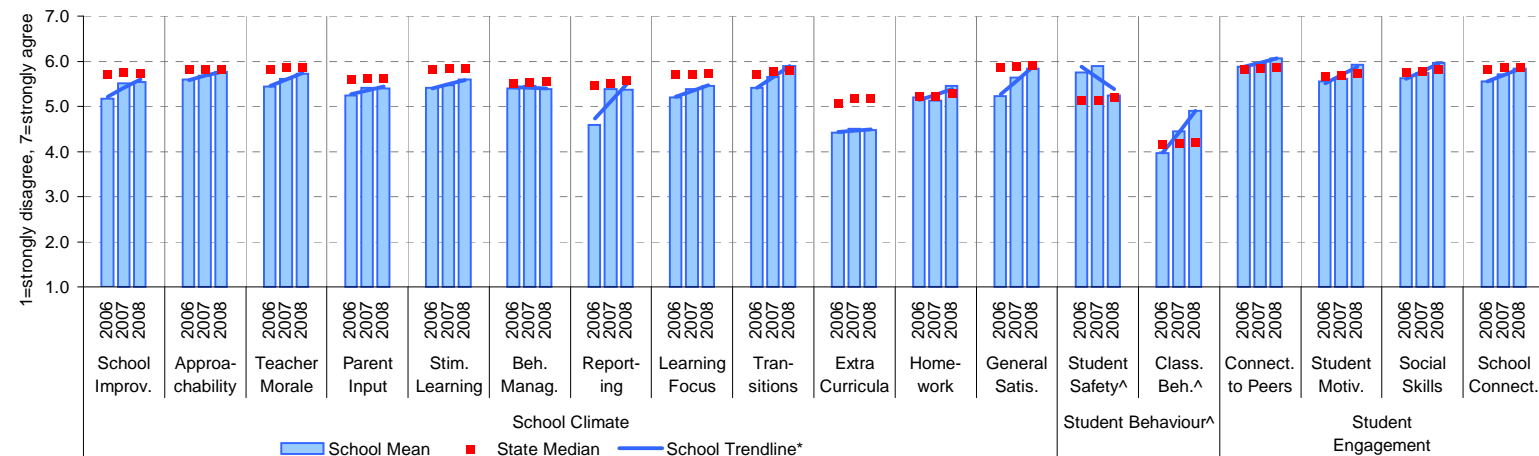
School name: Banyule Primary School

Explanation: A self-completion questionnaire to obtain parents' opinions of the school. Parents rated a number of statements using a scale where 1=strongly disagree & 7=strongly agree. The statements were grouped into the following categories.

Source of data: Data scanned from questionnaires completed by parents.

Variable No. Name	Year	School mean	State Primary median	Variable No. Name	Year	School mean	State Primary median	Variable No. Name	Year	School mean	State Primary median
1 School Improvement	2006	5.17	5.71	8 Learning Focus	2006	5.20	5.71	15 Connectedness to Peers	2006	5.88	5.83
	2007	5.51	5.75		2007	5.38	5.72		2007	5.97	5.83
	2008	5.55	5.74		2008	5.45	5.73		2008	6.06	5.85
2 Approachability	2006	5.59	5.81	9 Transitions	2006	5.41	5.72	16 Student Motivation	2006	5.56	5.66
	2007	5.67	5.82		2007	5.66	5.76		2007	5.61	5.69
	2008	5.77	5.83		2008	5.89	5.79		2008	5.92	5.72
3 Teacher Morale	2006	5.44	5.82	10 Extra Curricula	2006	4.41	5.07	17 Social Skills	2006	5.63	5.76
	2007	5.61	5.86		2007	4.51	5.17		2007	5.74	5.78
	2008	5.73	5.85		2008	4.47	5.19		2008	5.97	5.81
4 Parent Input	2006	5.24	5.59	11 Homework	2006	5.20	5.23	18 School Connectedness	2006	5.55	5.83
	2007	5.41	5.62		2007	5.13	5.23		2007	5.71	5.85
	2008	5.40	5.62		2008	5.45	5.28		2008	5.83	5.86
5 Stimulating Learning	2006	5.42	5.81	12 General Satisfaction	2006	5.23	5.87				
	2007	5.47	5.84		2007	5.65	5.88				
	2008	5.60	5.84		2008	5.84	5.91				
6 Behaviour Management	2006	5.40	5.51	13 Student Safety^	2006	5.75	5.13				
	2007	5.45	5.54		2007	5.89	5.12				
	2008	5.38	5.55		2008	5.24	5.20				
7 Reporting	2006	4.59	5.45	14 Classroom Behaviour^	2006	3.97	4.15				
	2007	5.39	5.51		2007	4.45	4.18				
	2008	5.36	5.56		2008	4.89	4.20				

## School Mean against Primary State Mean



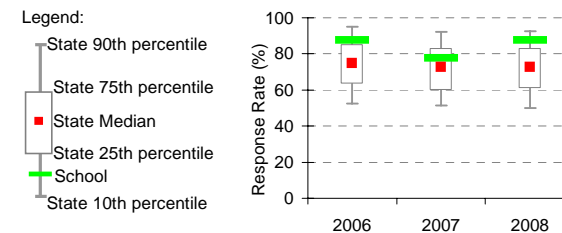
Notes: \* The school trendline is plotted when there is data for each calendar year.

^ Benchmarks available for Primary, Secondary, Pri/Sec, Special and SDS schools.

\*\* If there were 6 or less respondents, table data is not shown for confidentiality reasons. If there were 3 or less respondents, graph data is not shown for confidentiality reasons.

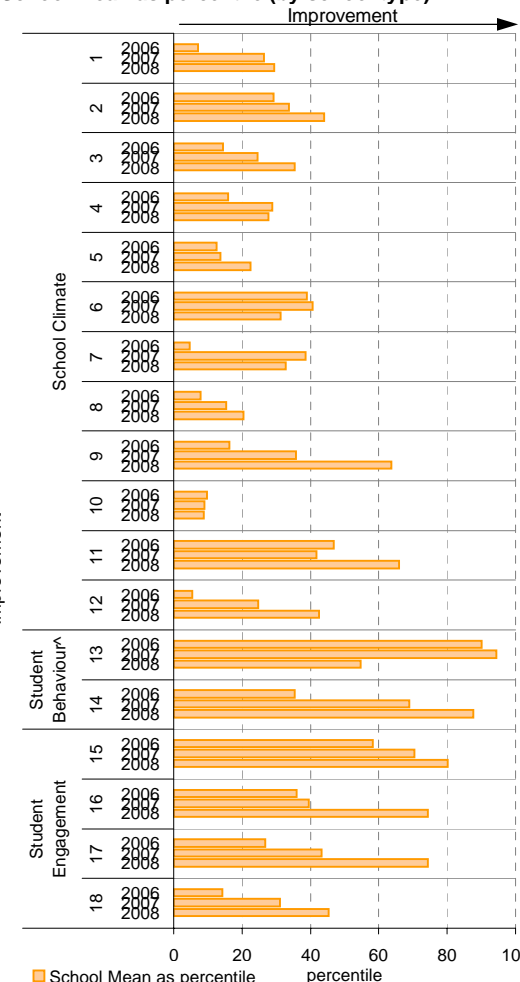
^ Parents' responses to all negatively phrased questions have been reversed for reporting purposes. Across all variables, the higher the score or percentile rank, the more positive parents' perceptions.

## School response rate\*\* against Primary school distribution



	No. of respondents	No. invited	Response Rate
2006	35	40	87.5%
2007	31	40	77.5%
2008	35	40	87.5%

## School Mean as percentile (by school type)



# Staff Opinion

School no: 4746

School name: Banyule Primary School

Explanation: A self-completion questionnaire to obtain the staff's opinions of the school. The survey was administered online using the School Organisational Health Questionnaire.

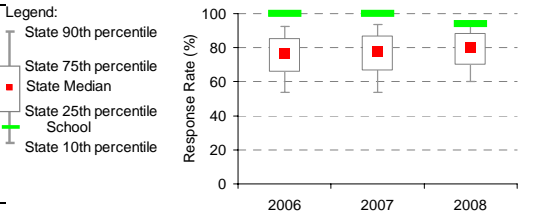
Source of data: Data transmitted from school staff to DEECD via an online survey application.

Variable	No.	Name	Year	School mean	State Primary median
1 Individual Morale			2006	73.5	75.6
			2007	79.2	76.8
			2008	81.5	78.1
2 School Morale			2006	67.8	78.1
			2007	78.2	79.2
			2008	87.5	80.8
3 Supportive Leadership			2006	82.5	80.0
			2007	88.2	80.6
			2008	87.8	82.2
4 Role Clarity			2006	75.0	79.6
			2007	77.2	80.1
			2008	85.6	81.3
5 Professional Interaction			2006	77.2	80.7
			2007	87.4	81.9
			2008	91.1	83.2
6 Participative Decision-Making			2006	81.6	75.1
			2007	84.9	76.3
			2008	87.5	77.4
7 Goal Congruence			2006	78.1	81.7
			2007	81.8	82.6
			2008	87.5	83.7

Variable	No.	Name	Year	School mean	State Primary median
8 Appraisal & Recognition			2006	78.7	71.6
			2007	80.4	73.1
			2008	83.6	75.0
9 Professional Growth			2006	72.5	74.2
			2007	77.3	76.0
			2008	80.3	76.9
10 Curriculum Coordination			2006	68.6	75.0
			2007	80.8	75.6
			2008	87.1	77.9
11 Effective Discipline Policy			2006	66.3	79.9
			2007	72.8	80.9
			2008	87.5	82.0
12 Student Orientation			2006	85.9	86.1
			2007	85.7	86.6
			2008	91.1	87.5
13 Student Motivation			2006	68.5	76.8
			2007	77.1	77.9
			2008	79.3	79.5
14 Student Decision-Making			2006	72.3	69.4
			2007	76.4	71.3
			2008	80.0	72.9

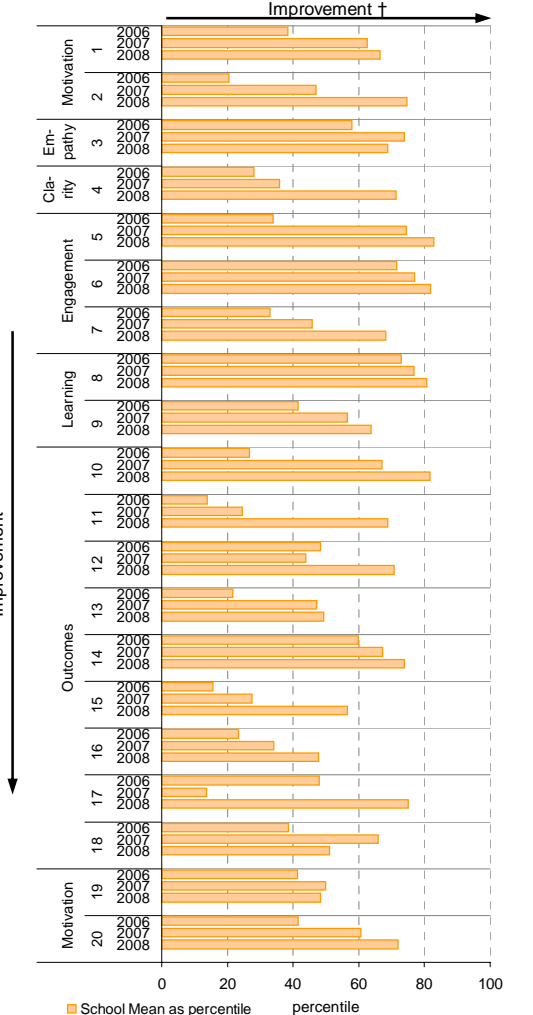
Variable	No.	Name	Year	School mean	State Primary median
15 Learning Environment			2006	71.6	81.3
			2007	77.2	82.5
			2008	85.3	84.1
16 Student Misbehaviour			2006	35.3	21.7
			2007	28.0	21.5
			2008	20.8	20.0
17 Classroom Misbehaviour			2006	14.2	13.8
			2007	21.5	13.3
			2008	9.2	12.6
18 Excessive Work Demands			2006	47.3	42.9
			2007	37.5	43.2
			2008	41.4	41.7
19 Individual Distress			2006	23.3	21.6
			2007	21.2	21.1
			2008	20.4	20.0
20 School Distress			2006	32.5	28.8
			2007	24.1	28.3
			2008	18.8	26.7

## School response rate\*\* against Primary school distribution

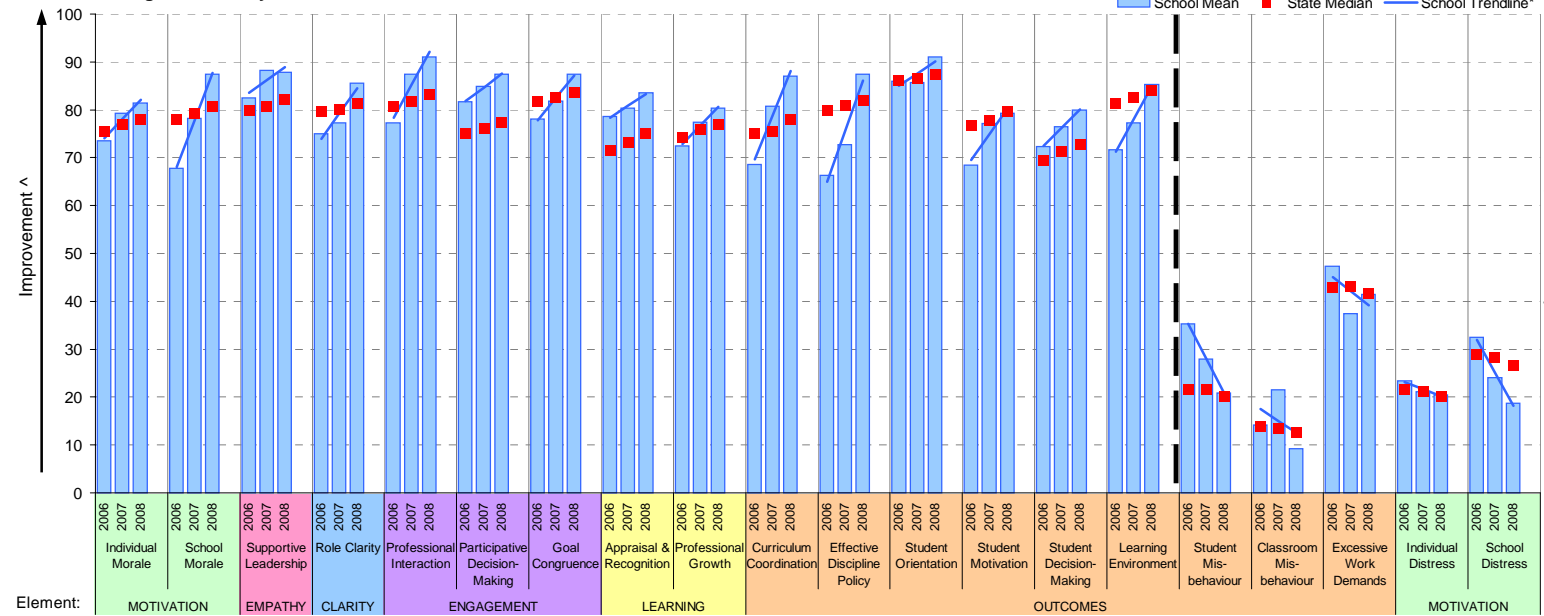


Year	No. of respondents	No. invited	Response Rate
2006	16	16	100%
2007	17	17	100%
2008	16	17	94%

## School Mean as percentile (by school type)



## School Mean against Primary State Median



Notes: \* The school trendline is being trialled. It is only plotted when there is data for each calendar year.

\*\* If there were 6 or less respondents, table data is not shown for confidentiality reasons. If there were 3 or less respondents, graph data is not shown for confidentiality reasons.

^ The higher the school mean, the more positive the outcome for variables 1 to 15. The lower the school mean, the more positive the outcome for variables 16 to 20.

† The higher the school percentile, the more positive the outcome for all variables.

^^ Benchmarks are available for Primary, Secondary, Pri/Sec, Special & SDS schools.

# Performance & Development Culture (P&DC)<sup>††</sup>

**NEW**

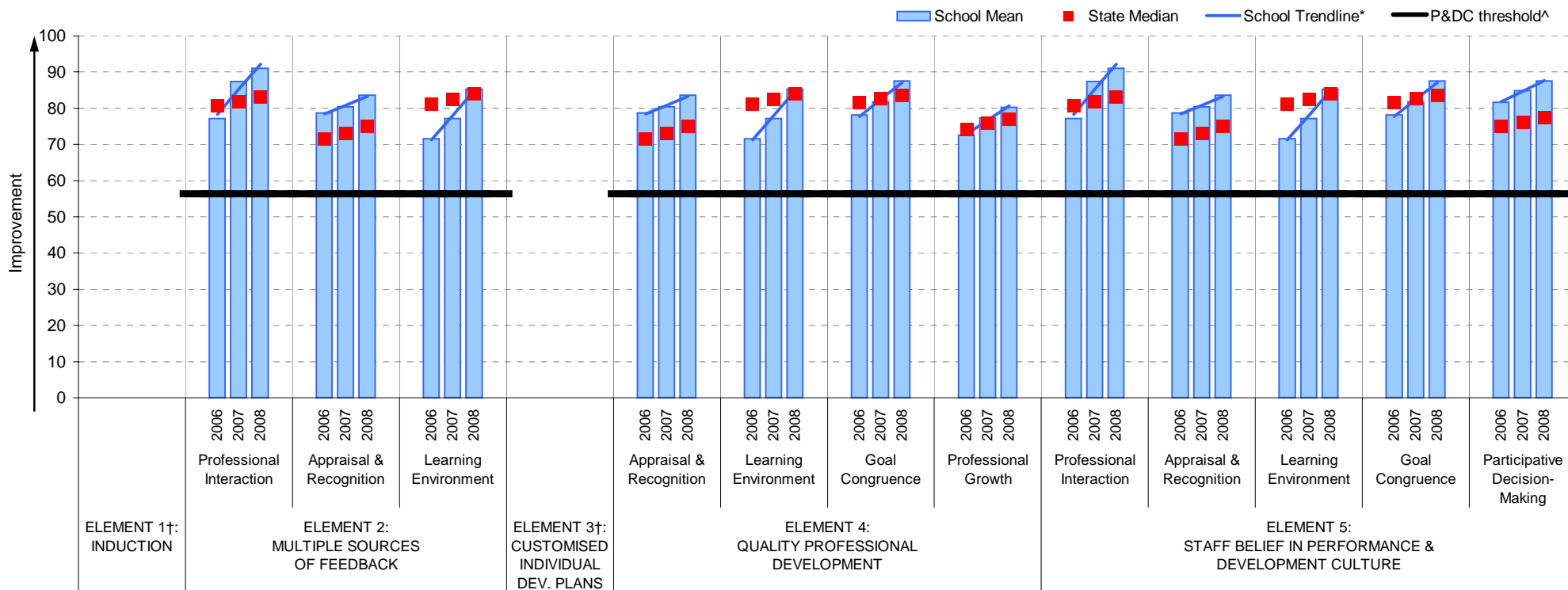
**School no:** 4746

**School name:** Banyule Primary School

**Explanation:** The data on this page refers to the Staff Opinion Survey.

**Source of data:** Data transmitted from school staff to DEECD via an online survey application.

## School Mean against Primary State Median



### Notes:

†† An assessment of the correlation between the P&DC Questionnaire and the Staff Opinion Survey was undertaken using data from Victorian Government schools that completed both surveys from 2005 to 2007 (ie. 699 schools). This led to the identification of the components of the Staff Opinion Survey that could be used to assist schools with the ongoing monitoring of their performance and development culture. Refer to the P&DC website for further information: <http://www.education.vic.gov.au/management/schoolimprovement/panddc/default.htm>. For numerical results relating to the above graph, refer to the Staff Opinion Survey page in this report.

† Note that there is no significant correlation between the Staff Opinion Survey and P&DC elements 1 (Induction) and 3 (Customised Individual Development Plans).

^ The P&DC threshold was derived from the P&DC Questionnaire 'percent favourable' methodology where a school is considered at the standard of accreditation when their Element score is >75% favourable (ie. at least 75% of staff selected the top two response categories in the P&DC Questionnaire).

\* The school trendline is only plotted when there is data for each calendar year.

\*\* If there were 3 or less respondents, graph data is not shown for confidentiality reasons.

^^ Benchmarks are available for Primary, Secondary, Pri/Sec, Special & SDS schools.

# Staff Sick Leave

**School no:** 4746

**School name:** Banyule Primary School

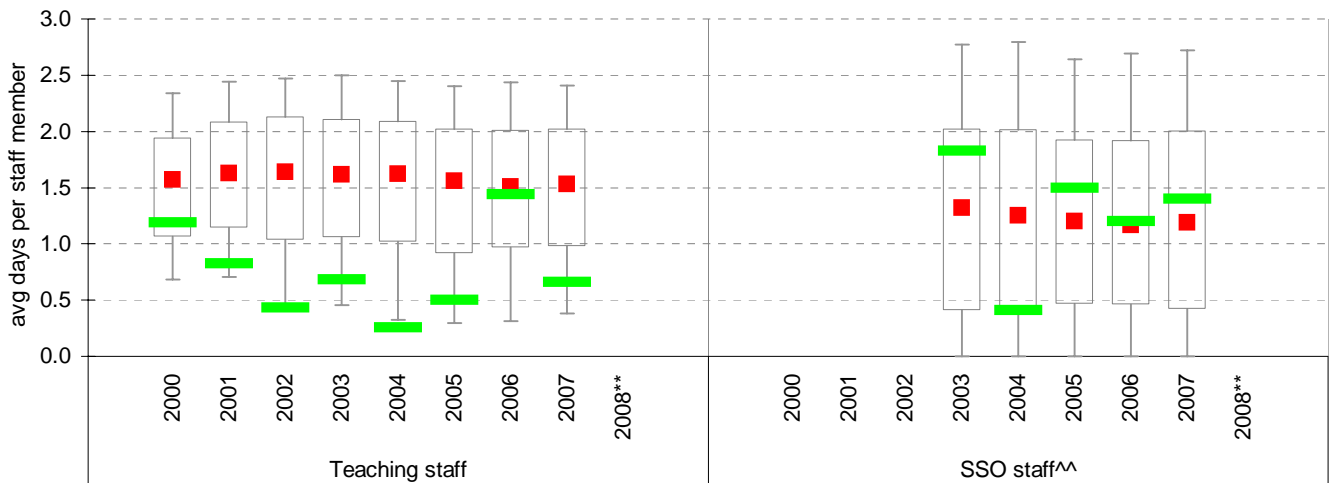
**Explanation:** The number of non-certificated and total sick leave days taken per staff member. A detailed explanation on how staff sick leave is calculated is provided in the Annual Reports Frequently Asked Questions page of the Standards website (<http://www.sofweb.vic.edu.au/standards/account/arepq.htm>).

**Source of data:** Human Resources Management System (HRMS)^.

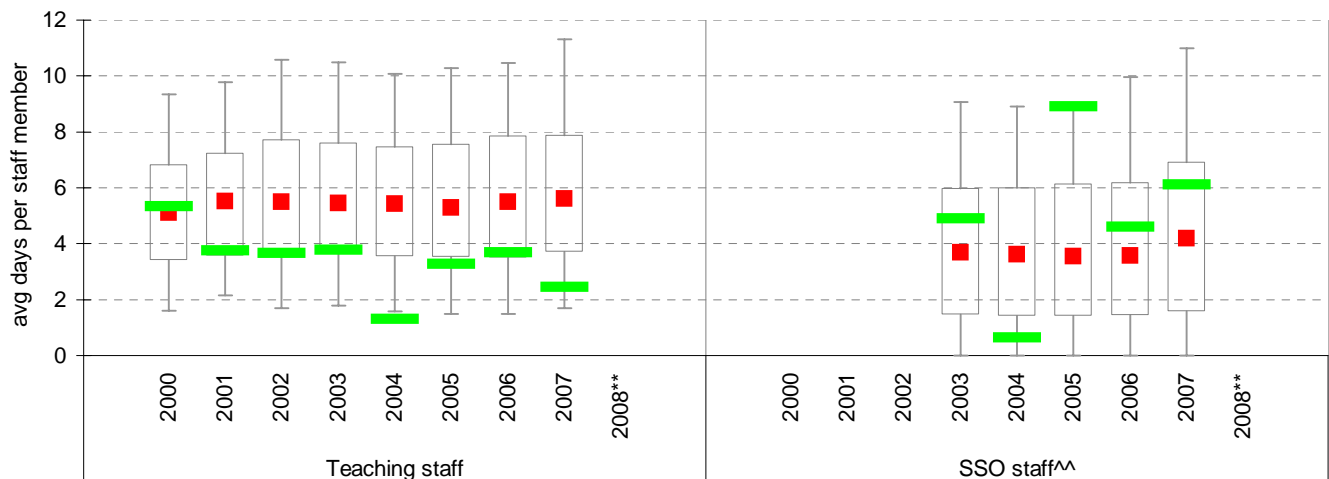
Staff Type	Non-Certificated sick leave days per staff member^									2007 State Median**
	2000	2001	2002	2003	2004	2005	2006	2007	2008**	
Teacher	1.19	0.82	0.43	0.68	0.26	0.50	1.44	0.66		1.53
SSO^^					0.41	1.50	1.20	1.40		1.19

Staff Type	Total sick leave days per staff member^									2007 State Median**
	2000	2001	2002	2003	2004	2005	2006	2007	2008**	
Teacher	5.33	3.76	3.67	3.79	1.30	3.28	3.69	2.45		5.61
SSO^^					0.65	8.91	4.60	6.11		4.20

## NON-CERTIFICATED sick leave



## TOTAL sick leave

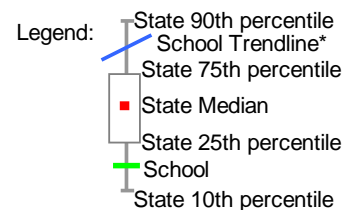


Note: \* The school trendline is only plotted when there is data for each calendar year.

\*\* Data for 2008 will be available in April / May of 2009.

^ There may be some discrepancy between the results from CASES & those from HRMS. The latter are considered to be more accurate.

^^ Data for SSO (School Services Officer) staff is only available from 2003.



# Teaching Staff Retention

**School no:** 4746

**School name:** Banyule Primary School

**Explanation:** The retention rate of teaching staff is determined by matching staff payroll records for the last pay in June of one year (Year A), to the last pay in June of the following year (Year B).

**Source of data:** Human Resources Management System (HRMS).

## Teaching Staff\*

Year A	Year B	Number of Teaching Staff in Year A	Number of Teaching Staff retained in Year B	Teaching Staff Retention Rate	Statewide Average
2005	2006	19	17	89%	87%
2006	2007	17	16	94%	86%
2007	2008	19	15	79%	84%

Of the 19 teaching service staff at June 2005 (including those on leave without pay), 17 or 89% were still at the school at June 2006. This figure across all Government schools was 87%.

Of the 17 teaching service staff at June 2006 (including those on leave without pay), 16 or 94% were still at the school at June 2007. This figure across all Government schools was 86%.

Of the 19 teaching service staff at June 2007 (including those on leave without pay), 15 or 79% were still at the school at June 2008. This figure across all Government schools was 84%.

## Ongoing Teaching Staff\*^

Year A	Year B	Number of Ongoing Teaching Staff in Year A	Number of Ongoing Teaching Staff retained in Year B	Ongoing Teaching Staff Retention Rate	Statewide Average
2005	2006	17	15	88%	91%
2006	2007	15	15	100%	90%
2007	2008	15	12	80%	88%

Of the 17 ongoing teaching service staff at June 2005 (including those on leave without pay), 15 or 88% were still at the school at June 2006. This figure across all Government schools was 91%.

Of the 15 ongoing teaching service staff at June 2006 (including those on leave without pay), 15 or 100% were still at the school at June 2007. This figure across all Government schools was 90%.

Of the 15 ongoing teaching service staff at June 2007 (including those on leave without pay), 12 or 80% were still at the school at June 2008. This figure across all Government schools was 88%.

Notes: \* Teaching staff includes Principal class, Teacher class and Instructor class. Teaching staff employed as visiting teachers, guidance officers, curriculum consultants, etc. are excluded as they are not charged to a particular school.

^ Not including fixed term staff, except for where staff had changed from ongoing in Year A to fixed term in Year B.

# Bank Balances

**School no:** 4746

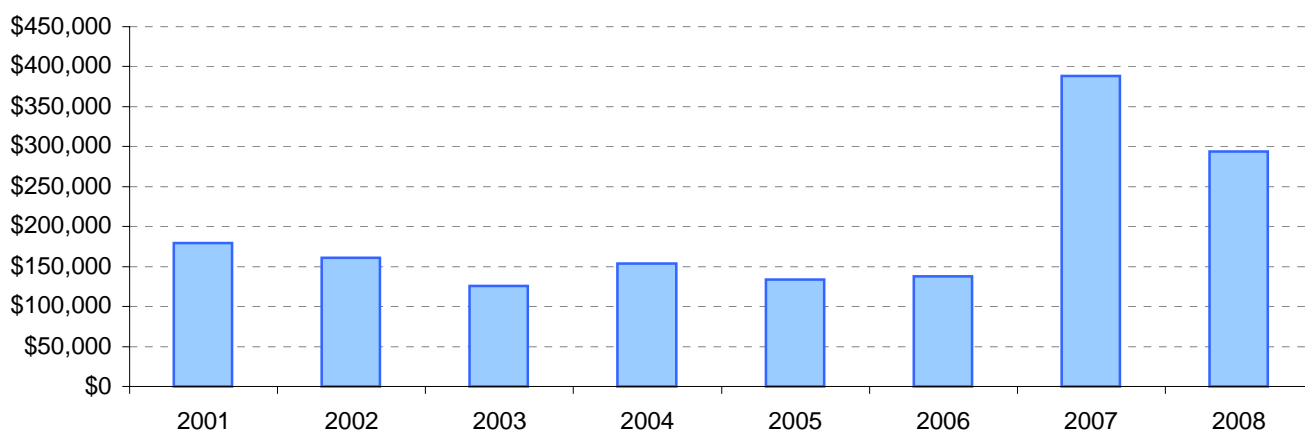
**School name:** Banyule Primary School

**Explanation:** Account balance figures include official and investment accounts, and are calculated by taking the opening balance at 1st January plus the total receipts at 31st December less total payments at 31st December.

## Account Balances (Official plus Investment Accounts)

2001	\$179,704	2005	\$133,613
2002	\$161,255	2006	\$137,949
2003	\$125,709	2007	\$388,548
2004	\$153,664	2008	\$293,920

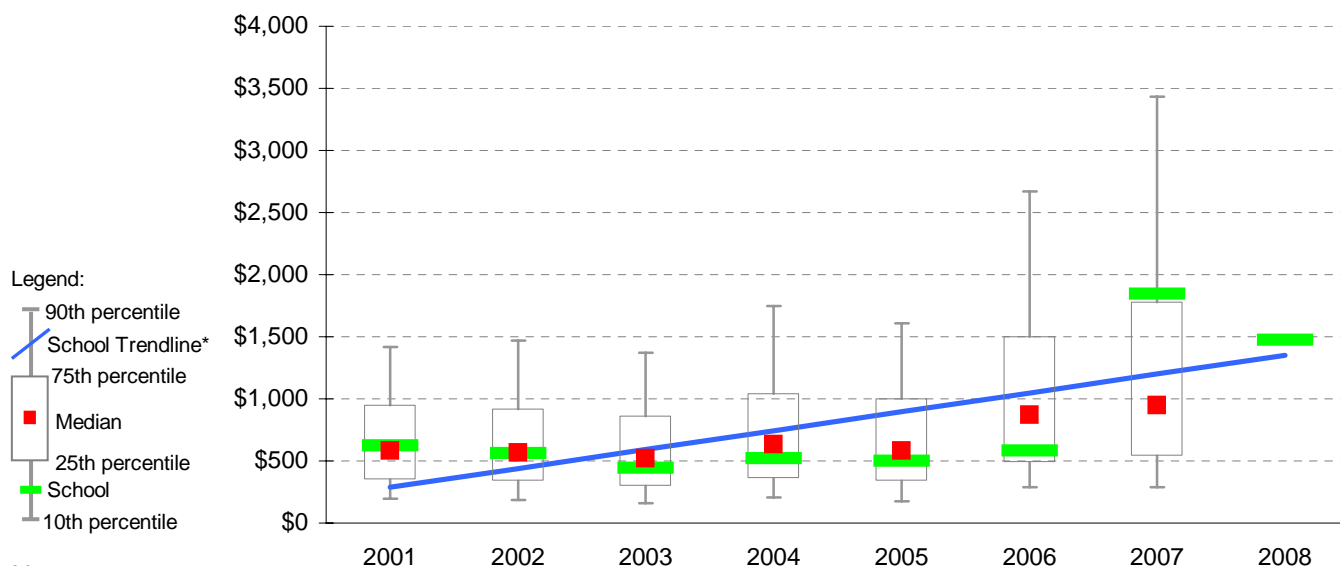
### Account Balances



## Account Balances (Official plus Investment Accounts) per student<sup>†</sup>

2001	\$622	2005	\$502
2002	\$563	2006	\$584
2003	\$444	2007	\$1,844
2004	\$523	2008	\$1,473

### School account balances per student enrolled in August census plotted on state Primary benchmarks<sup>^</sup>



#### Notes:

\* The school trendline is being trialled. It is only plotted when there is data for each calendar year.

† The account balance per student has been calculated to enable some comparison to be made between schools.

^ Benchmarks for primary, secondary, pri/sec, SDS, special and language schools.